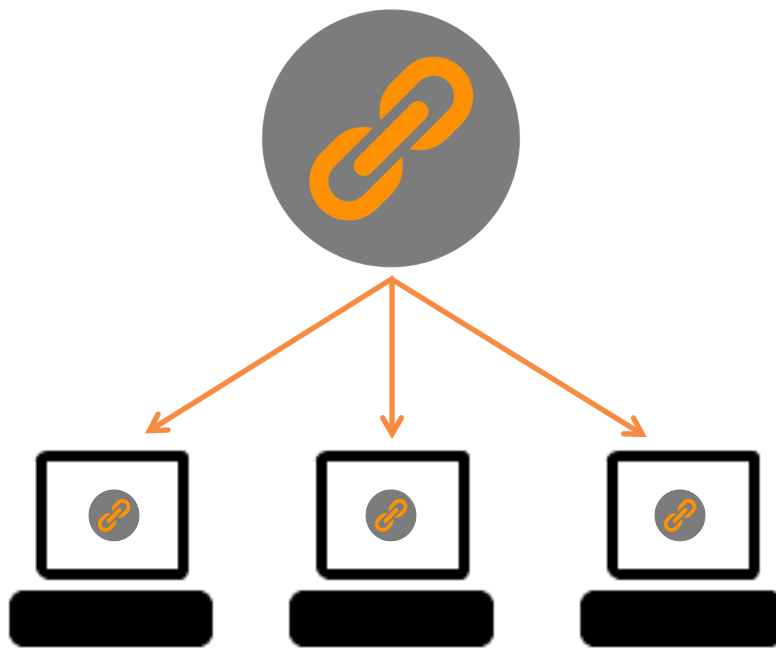


# ACCESSAGILITY

## SCCM 2012 Deployment of BridgeChecker



**AccessAgility LLC****© 2015 AccessAgility LLC.****All rights reserved.**

No part of this publication may be reproduced, stored in a retrieval system, or transmitted, in any form or by any means, mechanical, electronic, photocopying, recording, or otherwise, without prior written permission of AccessAgility LLC, with the following exceptions: Any person is hereby authorized to store documentation on a single computer for personal use only and to print copies of documentation for personal use provided that the documentation contains AccessAgility's copyright notice.

The AccessAgility logo is a trademark of AccessAgility LLC. Use of the AccessAgility logo for commercial purposes without the prior written consent of AccessAgility may constitute trademark infringement and unfair competition in violation of federal and state laws.

No licenses, express or implied, are granted with respect to any of the technology described in this document. AccessAgility retains all intellectual property rights associated with the technology described in this document.

Every effort has been made to ensure that the information in this document is accurate. AccessAgility is not responsible for typographical errors.

**AccessAgility LLC****8601 Westwood Center Drive Suite 250****Vienna, VA 22182****703-870-3949**

Even though AccessAgility has reviewed this document, ACCESSAGILITY MAKES NO WARRANTY OR REPRESENTATION, EITHER EXPRESS OR IMPLIED, WITH RESPECT TO THIS DOCUMENT, ITS QUALITY, ACCURACY, MERCHANTABILITY, OR FITNESS FOR A PARTICULAR PURPOSE. AS A RESULT, THIS DOCUMENT IS PROVIDED "AS IS," AND YOU, THE READER, ARE ASSUMING THE ENTIRE RISK AS TO ITS QUALITY AND ACCURACY. IN NO EVENT WILL ACCESSAGILITY BE LIABLE FOR DIRECT, INDIRECT, SPECIAL, INCIDENTAL, OR CONSEQUENTIAL DAMAGES RESULTING FROM ANY DEFECT OR INACCURACY IN THIS DOCUMENT, even if advised of the possibility of such damages THE WARRANTY AND REMEDIES SET FORTH ABOVE ARE EXCLUSIVE AND IN LIEU OF ALL OTHERS, ORAL OR WRITTEN, EXPRESS OR IMPLIED. No AccessAgility dealer, agent, or employee is authorized to make any modification, extension, or addition to this warranty.

Some states do not allow the exclusion or limitation of implied warranties or liability for incidental or consequential damages, so the above limitation or exclusion may not apply to you. This warranty gives you specific legal rights, and you may also have other rights which vary from state to state.

# Table of Contents

INTRODUCTION .....	1
PREREQUISITES .....	1
CREATE A SHARED FOLDER FOR BRIDGECHECKER .....	2
CONFIGURE SCCM FOR USE .....	2
CONFIGURE BOUNDARY GROUP .....	2
CONFIGURE BOUNDARY .....	5
CONFIGURE DISCOVERY METHODS .....	7
CONFIGURE WINDOWS7 DEVICE COLLECTION .....	9
HELP! MY CLIENT COMPUTER ISN'T SHOWING UP! .....	15
CREATE SOFTWARE DEPLOYMENT FOR APPLICATION .....	15
DEPLOY SOFTWARE .....	19
UNINSTALL SOFTWARE USING SCCM .....	27

# Introduction

This guide explains the steps for mass deployment of the BridgeChecker software using Microsoft's System Center Configuration Manager 2012.

## Prerequisites

Windows 2012 with:

- DNS
- DHCP
- Active Directory
- Windows ADK
- SQL 2012 R2

Follow the prerequisite install guide here:

<https://sccmentor.wordpress.com/2014/01/08/sccm-2012-r2-step-by-step-installation-guide/>

Download and Install SCCM:

<http://www.microsoft.com/en-us/evalcenter/evaluate-system-center-2012-configuration-manager-and-endpoint-protection>

# Create a Shared Folder for BridgeChecker

Create a folder on the C:\ drive of the server, and share it to "domain computers" with read access.

Call it something that indicates it contains BridgeChecker. For Example: "C:\Software"

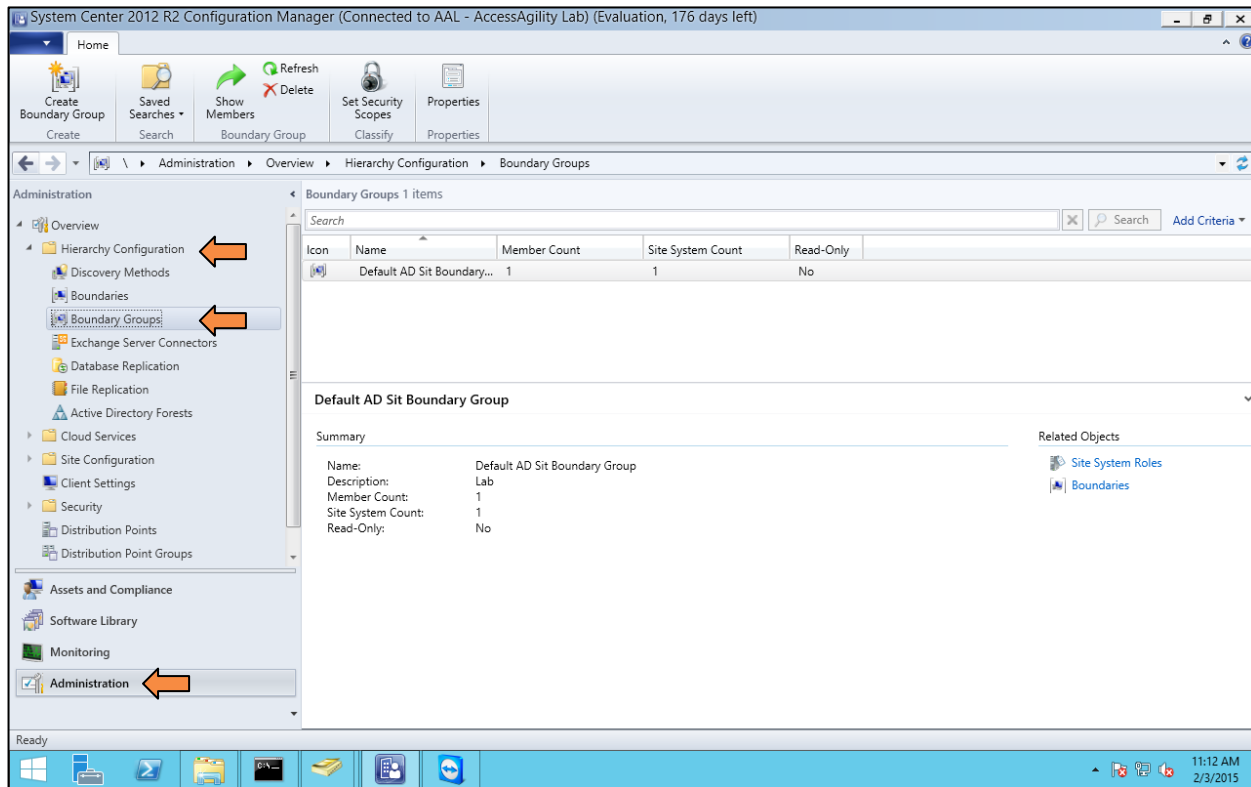
Unzip BridgeChecker and put the unzipped folder inside this newly shared folder.

## Configure SCCM for Use

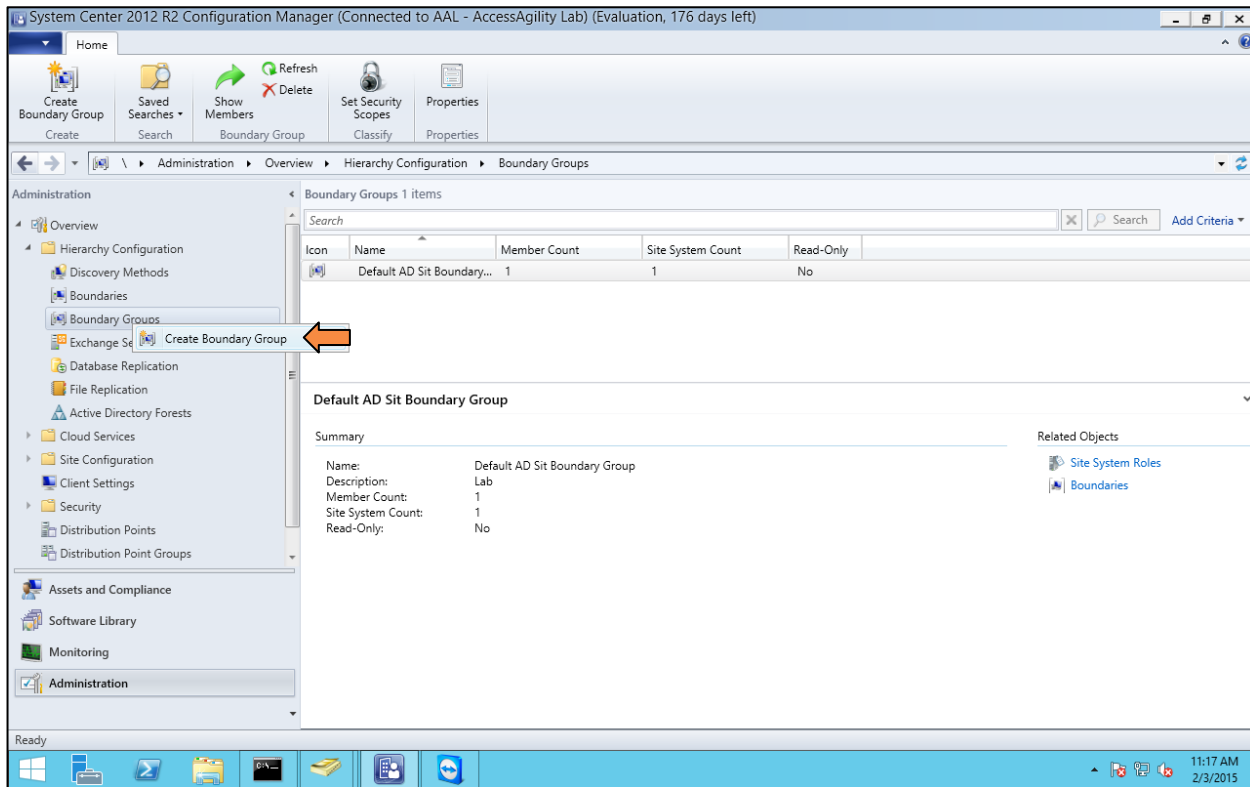
Open System Center 2012 R2 Configuration Manager

### Configure Boundary Group

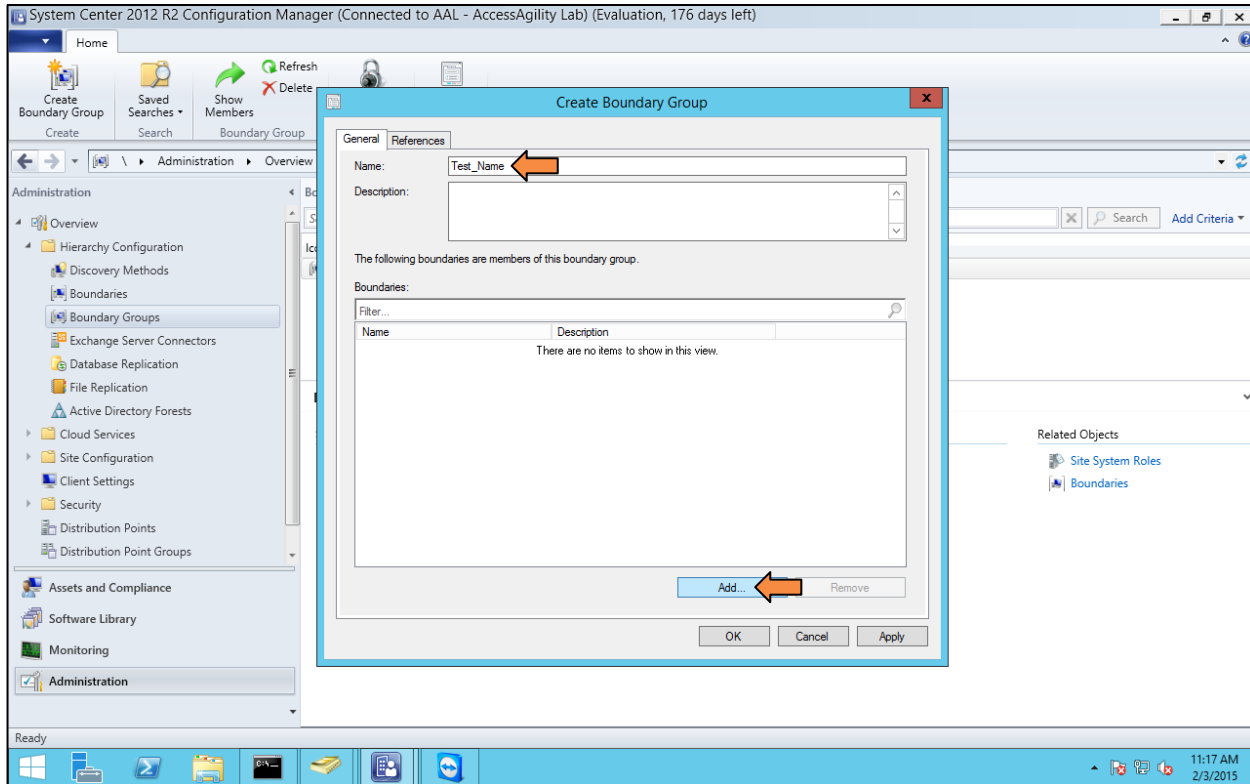
Go to **Administration** → **Hierarchy Configuration** → **Boundary Groups**



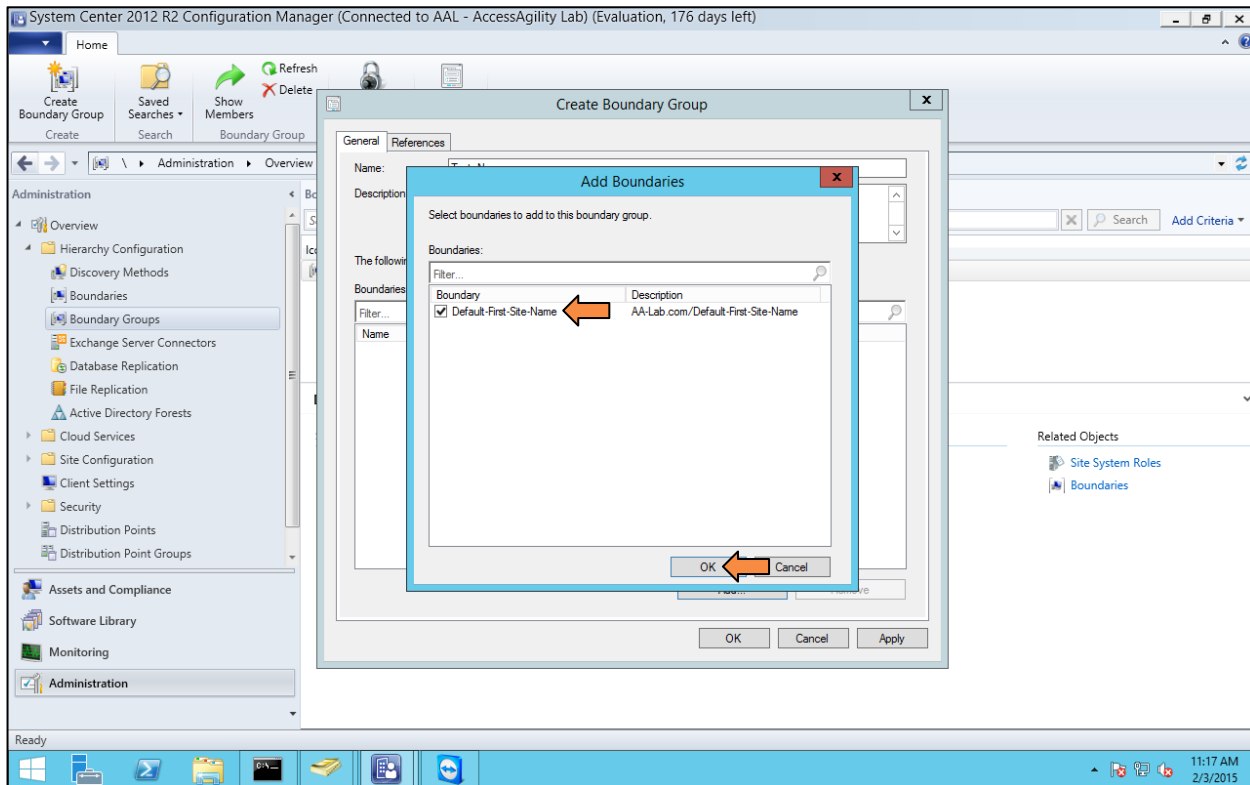
Right click on **Boundary Groups** and select **Create Boundary Group**.



Create a name for the group and then choose **Add** at the bottom to add a boundary.



Choose **Default-First-Site-Name** and then click **OK**.



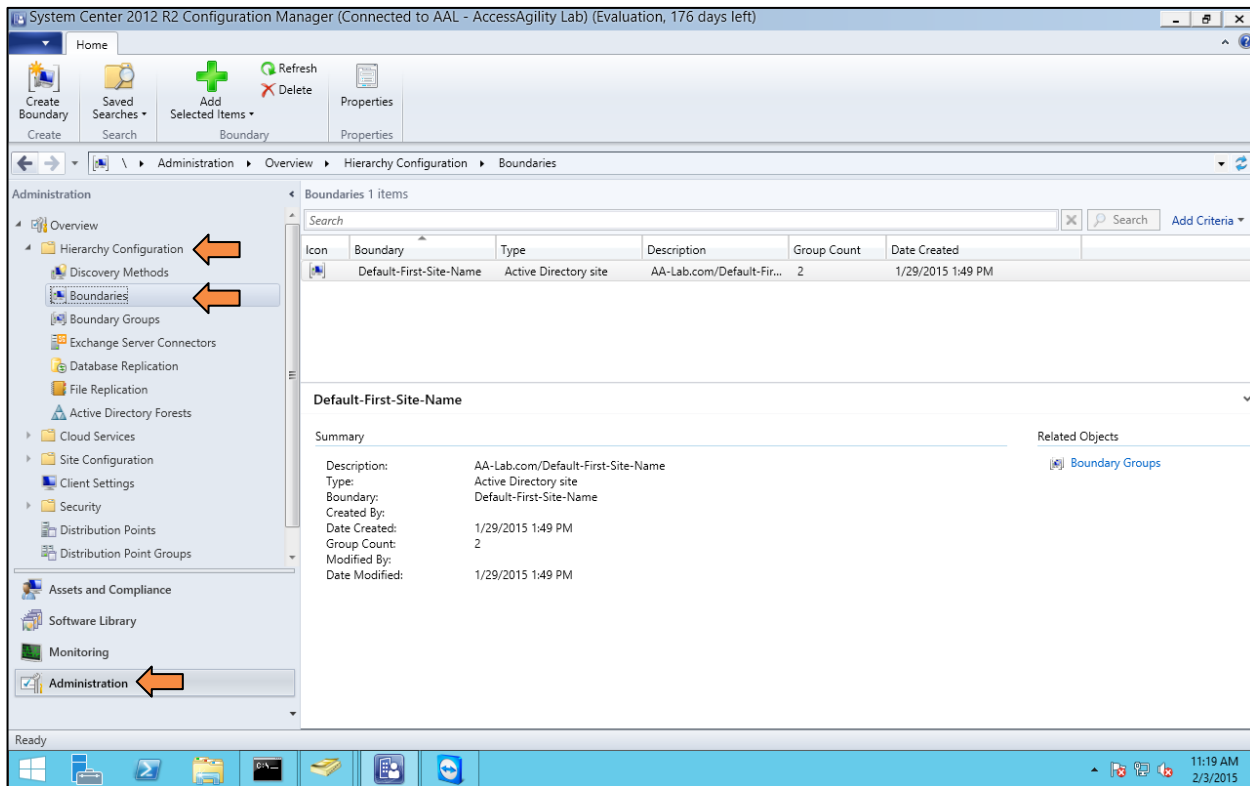
Choose the **References** tab, and check the box that says **Use this boundary group for site assignment**.

Click **Add** at the bottom to add a site system server. Use the server this is installed on for basic install.

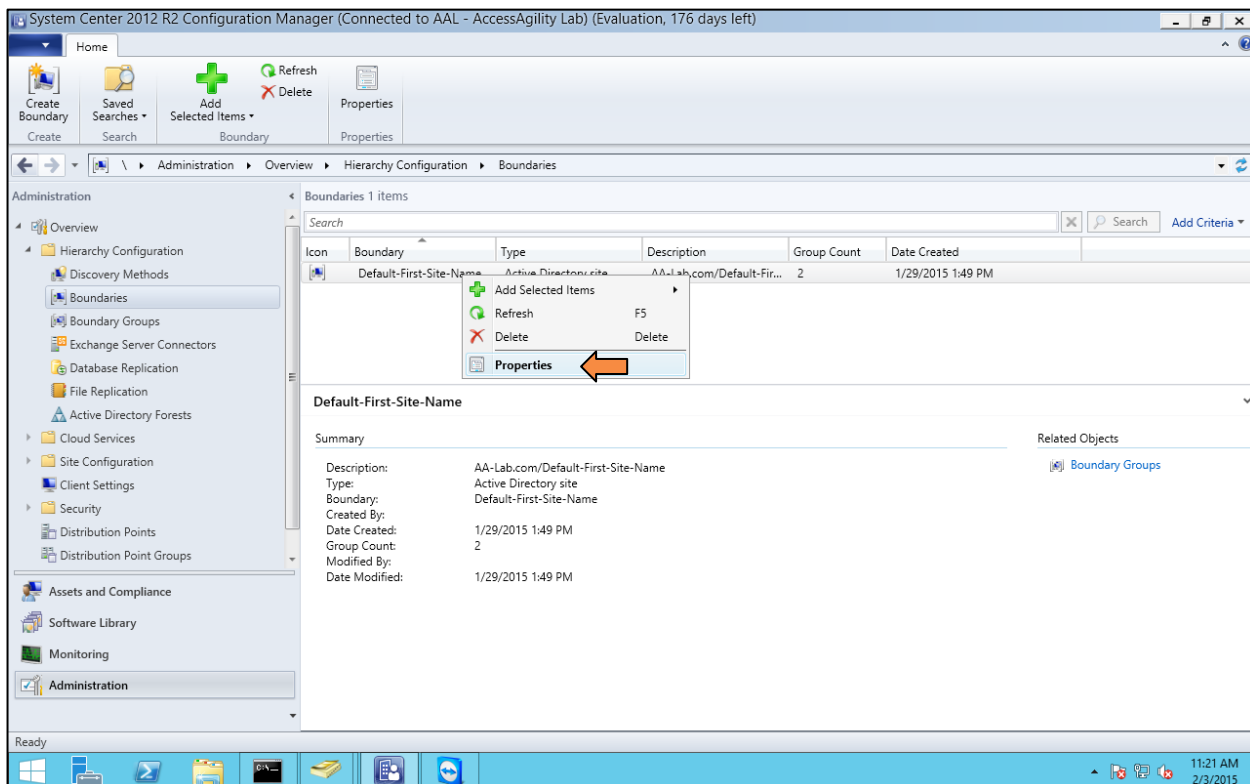
Click **Apply** and then **OK** to finish configuring the boundary group.

## Configure Boundary

Go to **Administration** → **Hierarchy Configuration** → **Boundaries**

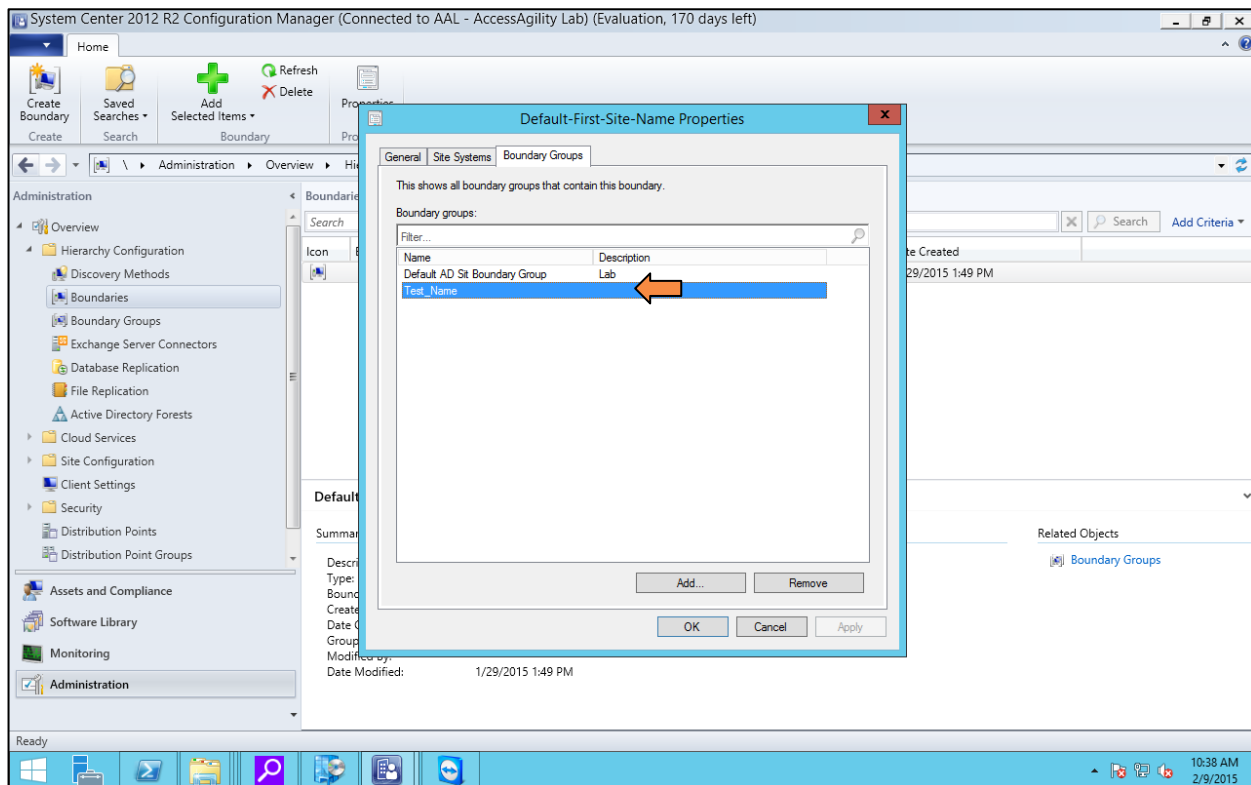


Right click on **Default-First-Site-Name** and select **Properties**.





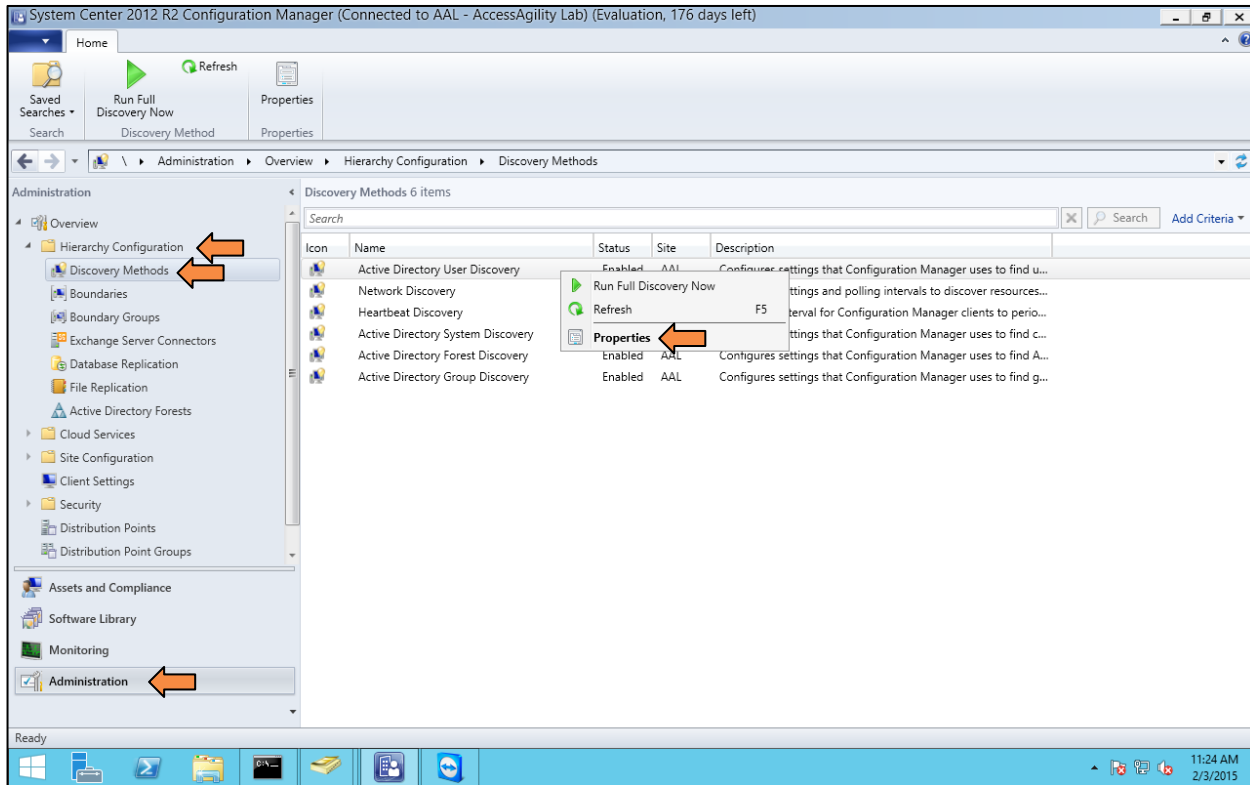
Click on the **Boundary Groups** tab, confirm that this is a member of the newly created boundary group.



## Configure Discovery Methods

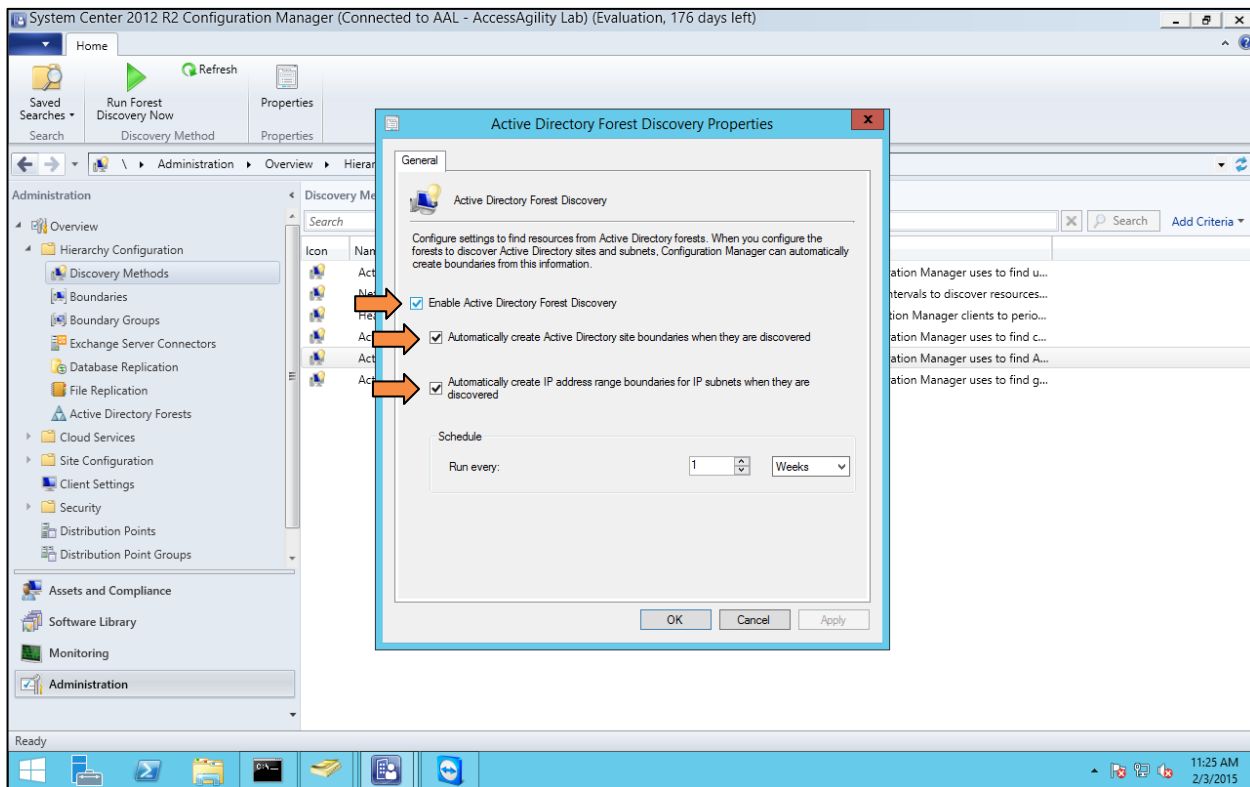
Go to **Administration** → **Hierarchy Configuration** → **Discovery Methods**

Right click on **Active Directory Forest Discovery** and choose **Properties**.



Check the box for

- **Enable Active Directory Forest Discovery**
- **Automatically create Active Directory site boundaries when they are discovered**
- **Automatically create IP address range boundaries for IP subnets when they are discovered**

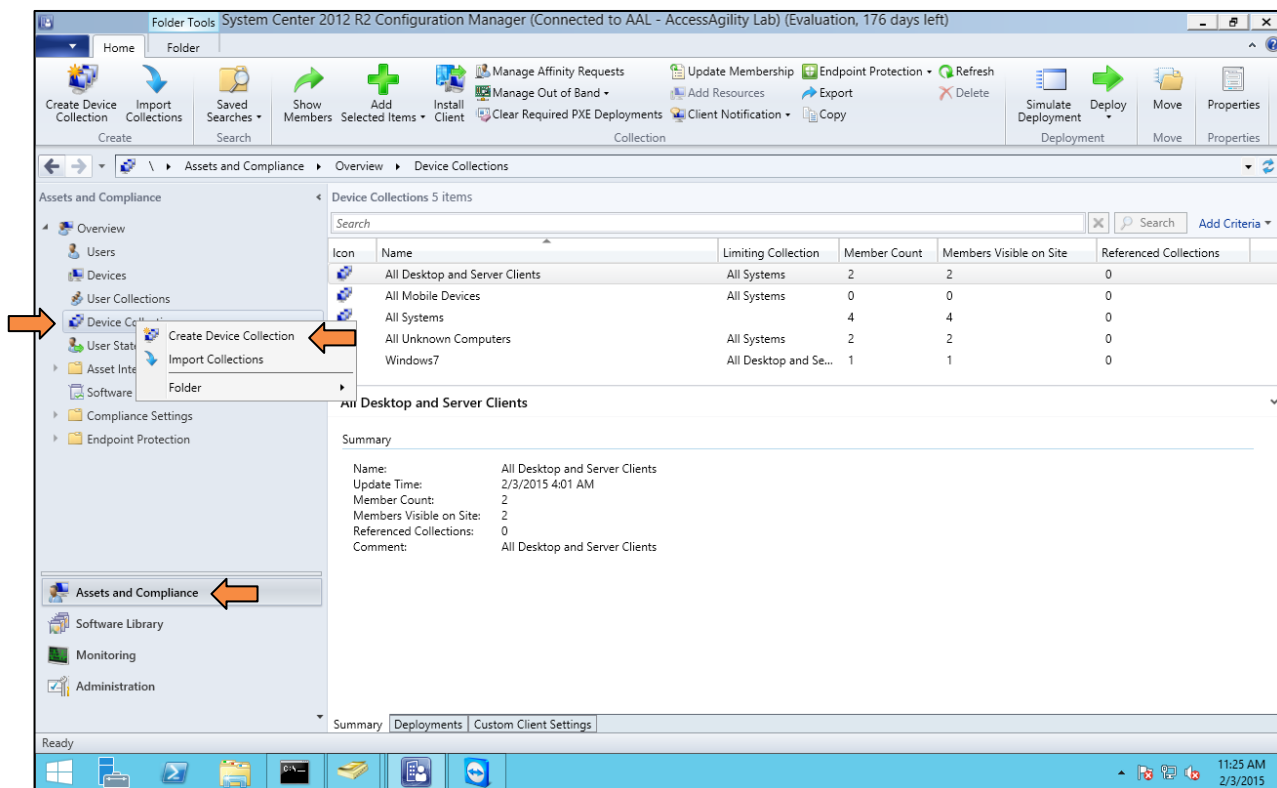


Click **OK**.

## Configure Windows7 Device Collection

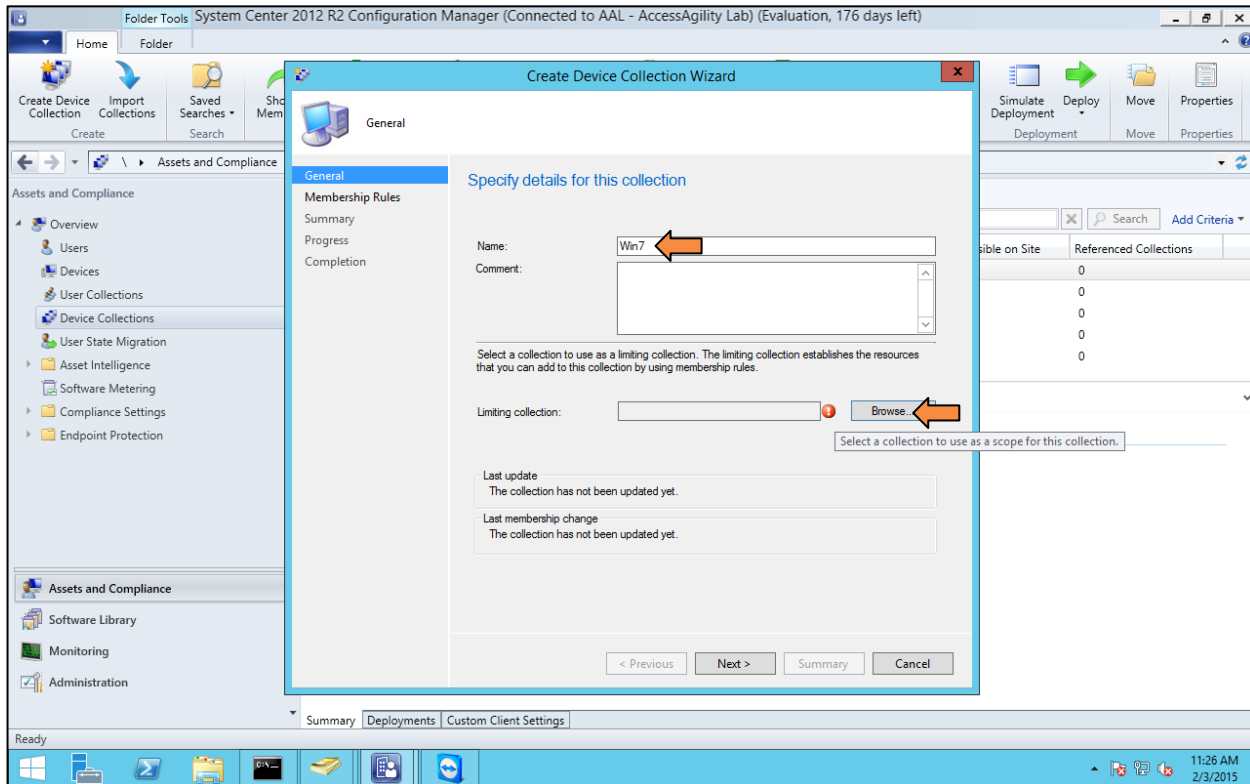
Go to **Assets and Compliance** → **Device Collections**

Right click on **Device Collections** and choose **Create Device Collection**.

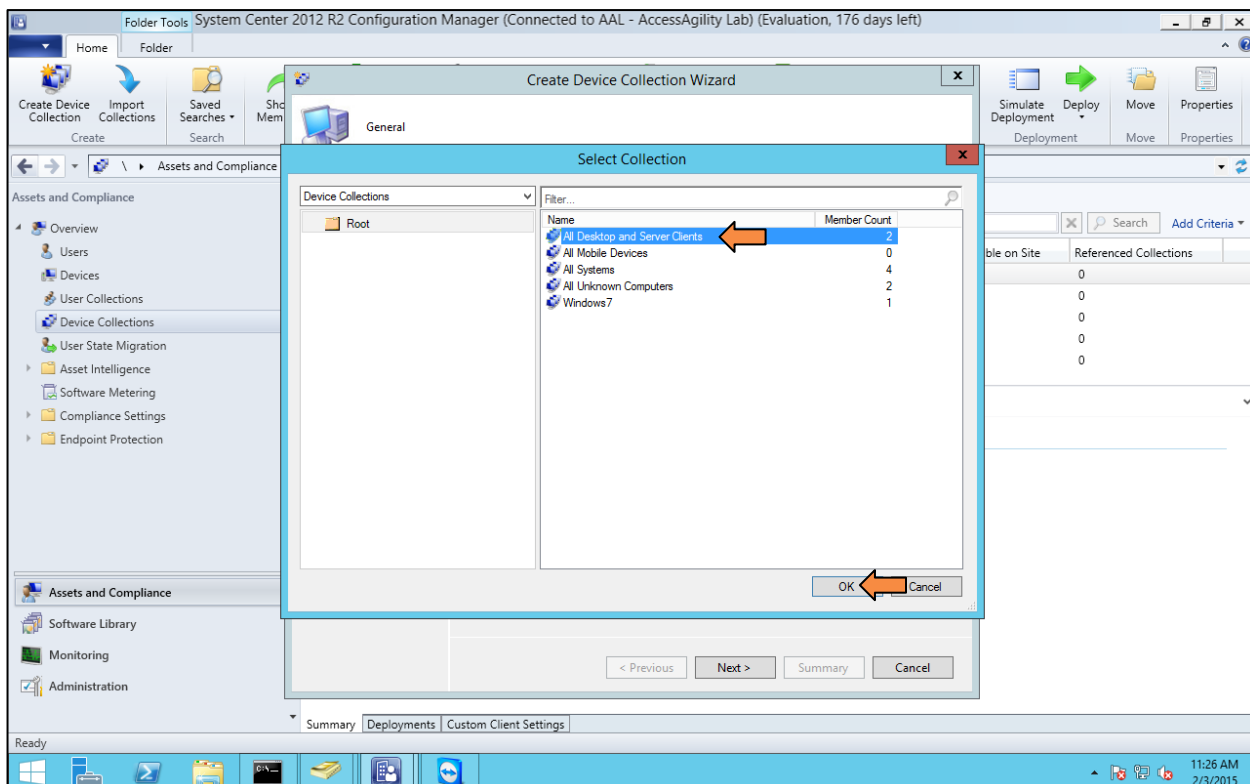


Give it a name. For Example: "Win7"

Then, choose the Limiting collection. Click **Browse**.

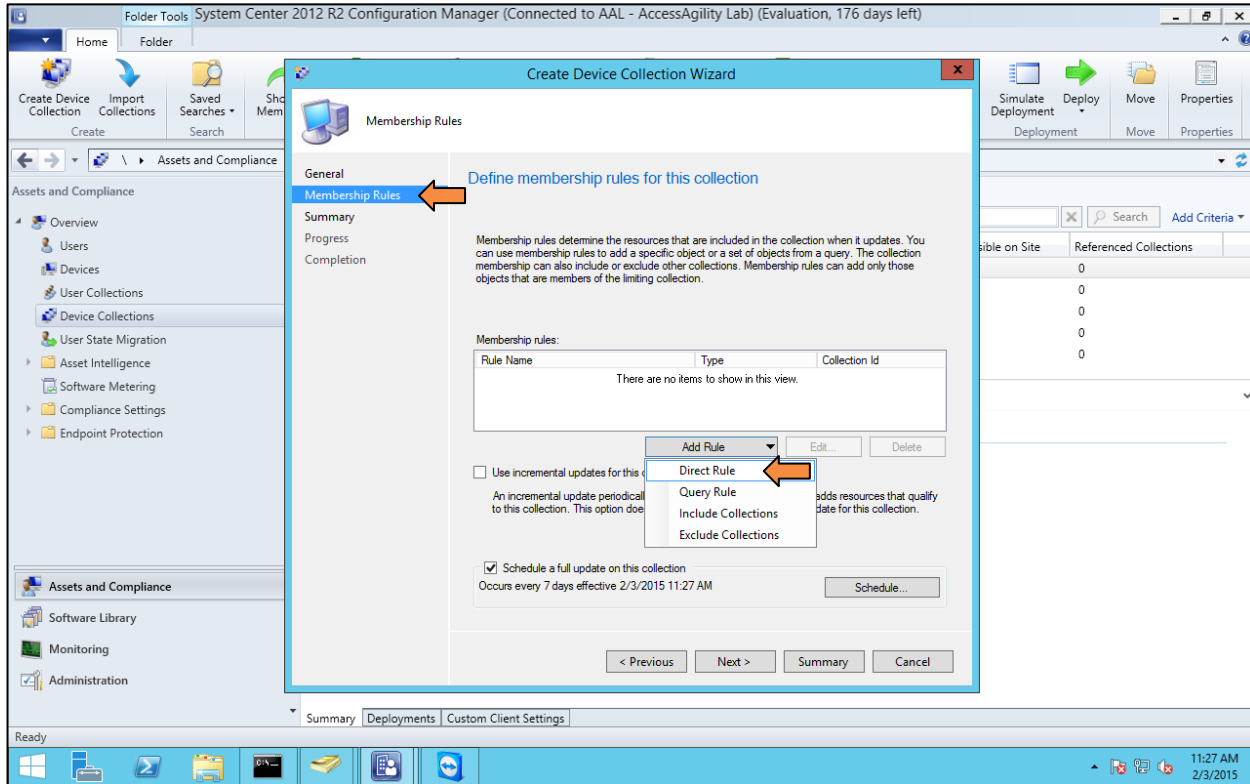


Choose the **All Desktop and Server Clients** option, even if there are currently no members. Click **OK**.

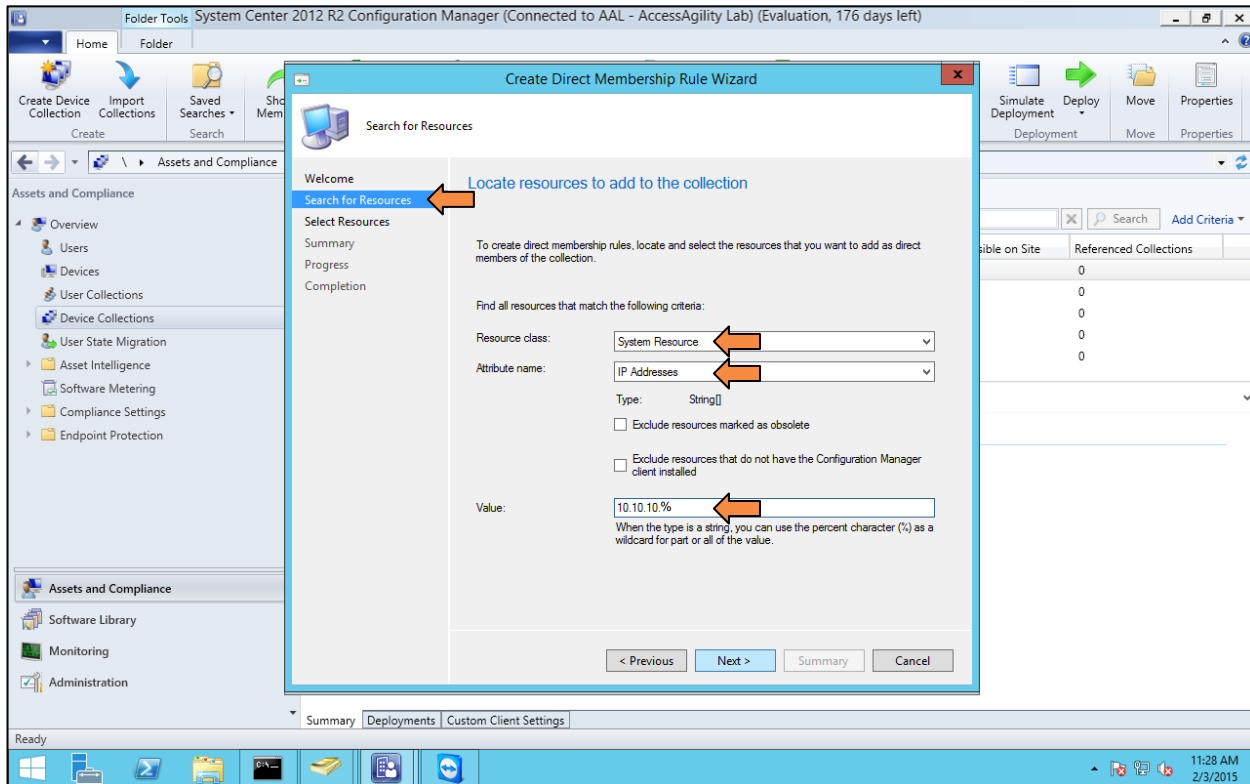


Back at the Create Device Collection Wizard, click **Next**.

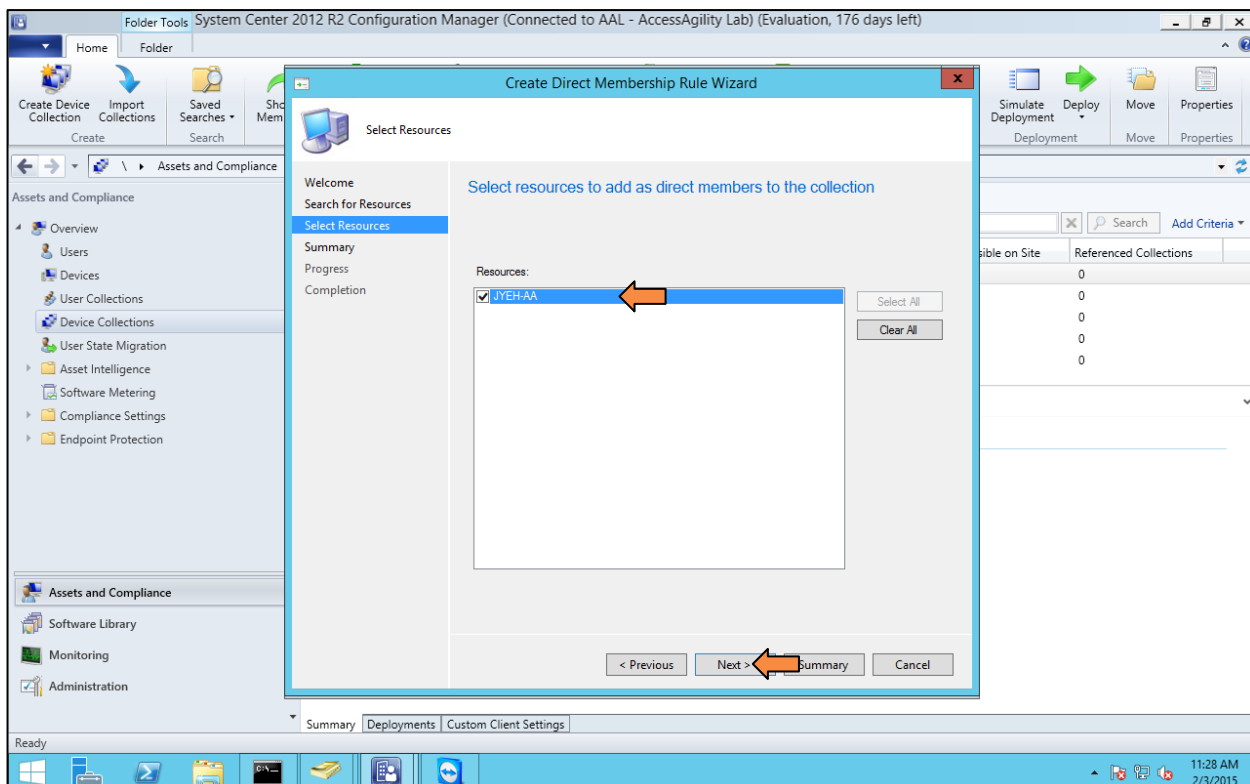
**Membership Rules:** Click the **Add Rule** button. Choose **Direct Rule**.



*Search for Resources:* Resource class should be **System Resource**. Attribute Name should be **IP Addresses**. Value should be the IP Address Range of the network the software would be deployed on. (For Example: 10.10.10.%).

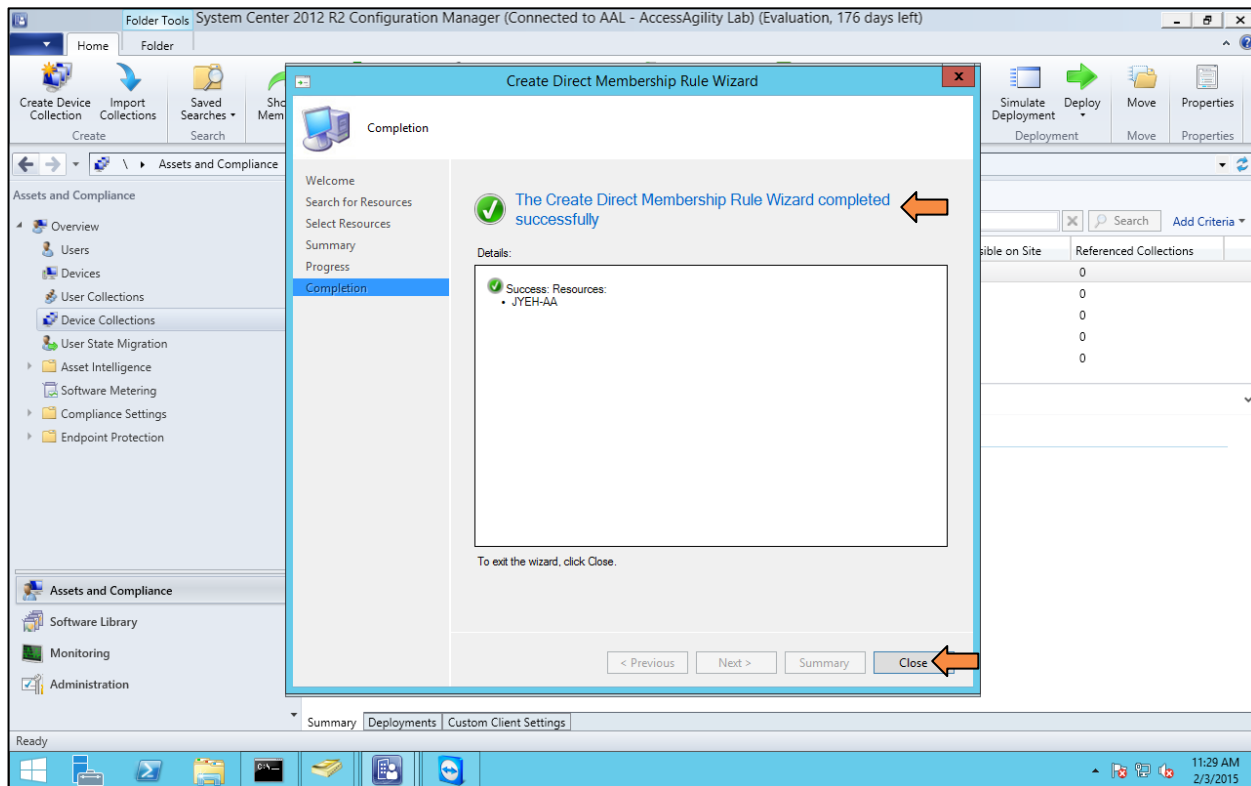


Select the computer(s) that will receive the software from the list. Click **Next**.

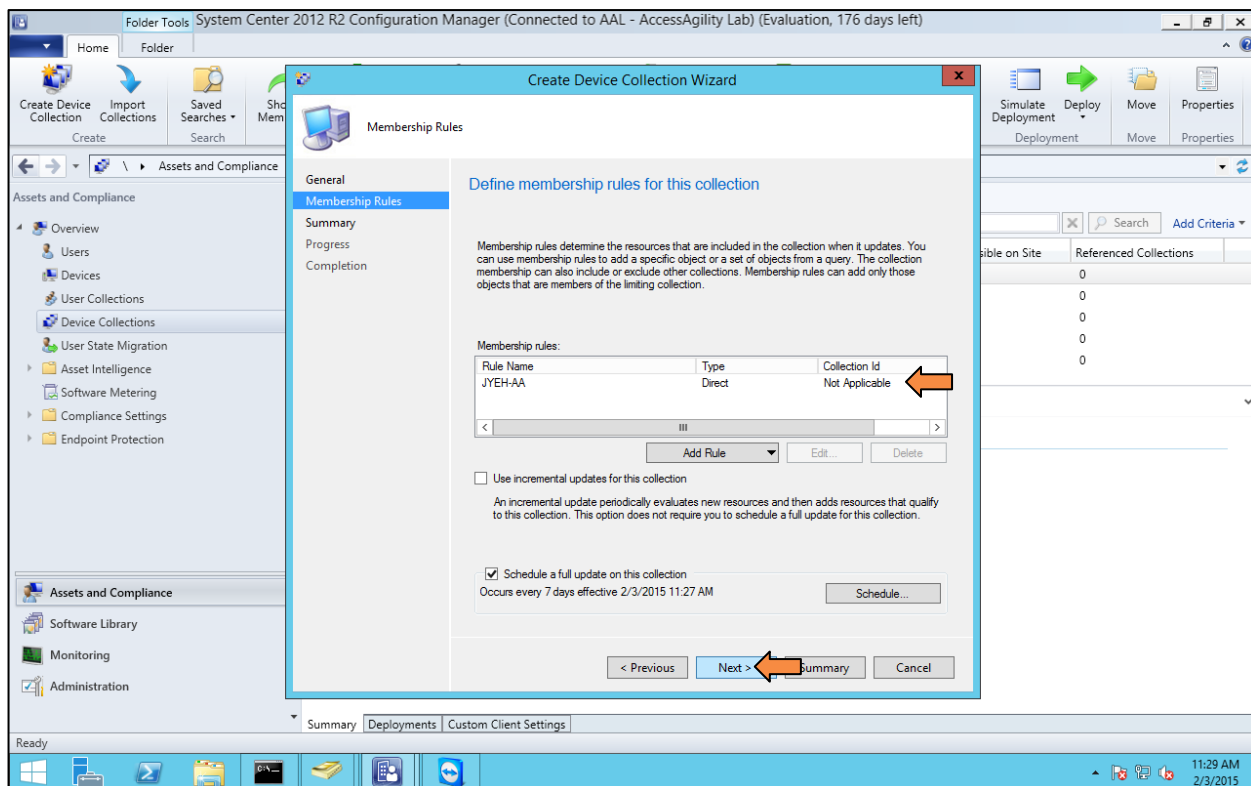


*Summary:* This screen will show the chosen resources. Click **Next**.

*Progress and Completion:* Gives a green check when completed. Click **Close**.



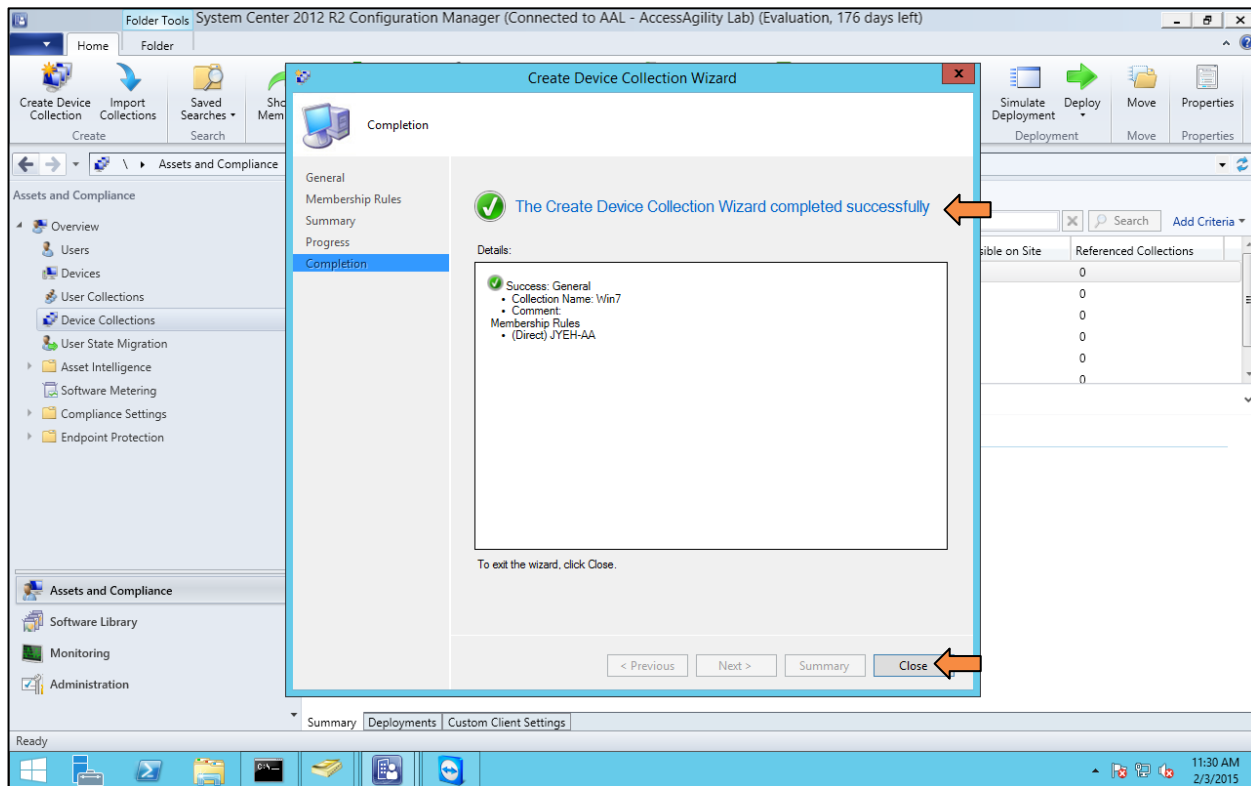
*Membership Rules:* Back at this screen with a rule created. Click **Next**.





*Summary:* This screen will show the chosen resources. Click **Next**.

*Progress and Completion:* Gives a green check when completed. Click **Close**.



# Help! My Client Computer Isn't Showing Up!

The SCCM client may need to be installed on the client machine(s).

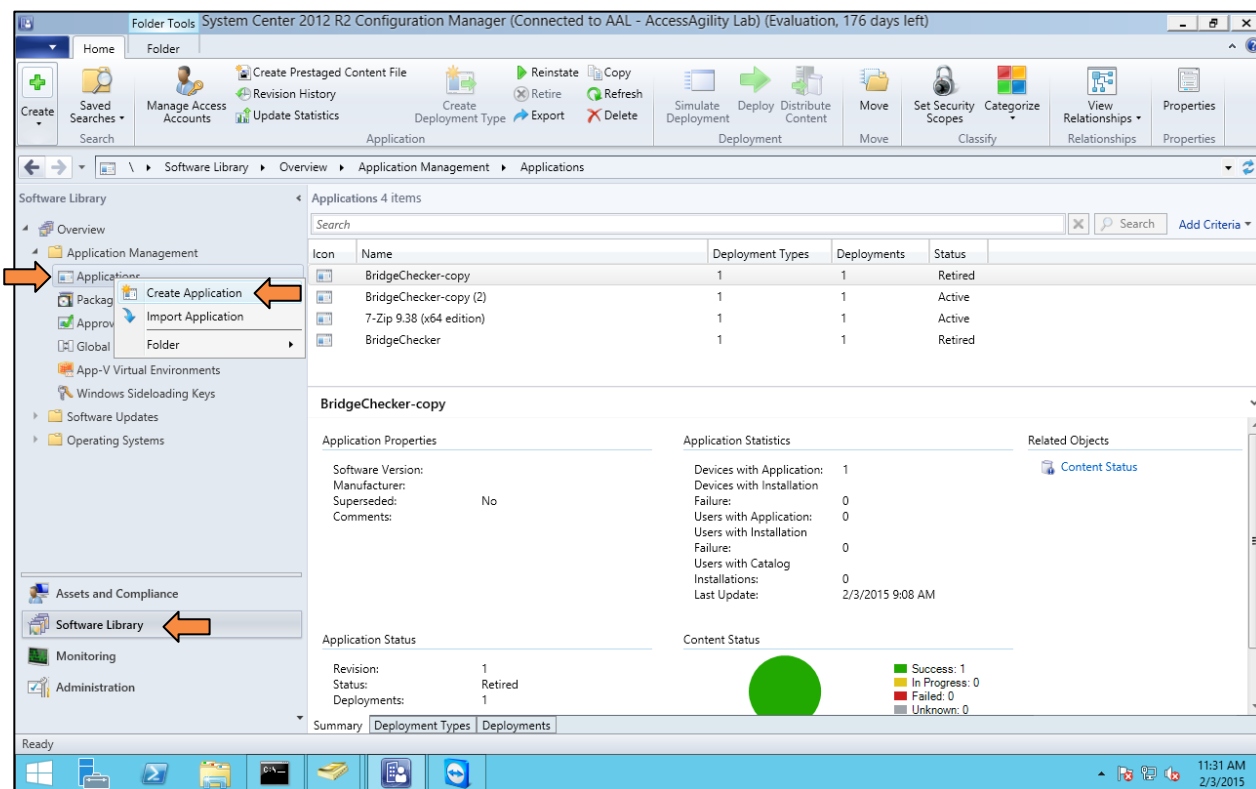
Follow these instructions:

<http://heineborn.com/tech/sccm-client-install-uninstall/>

## Create Software Deployment for Application

Go to Software **Library** → **Applications**

Right click on **Applications** and choose **Create Application**.



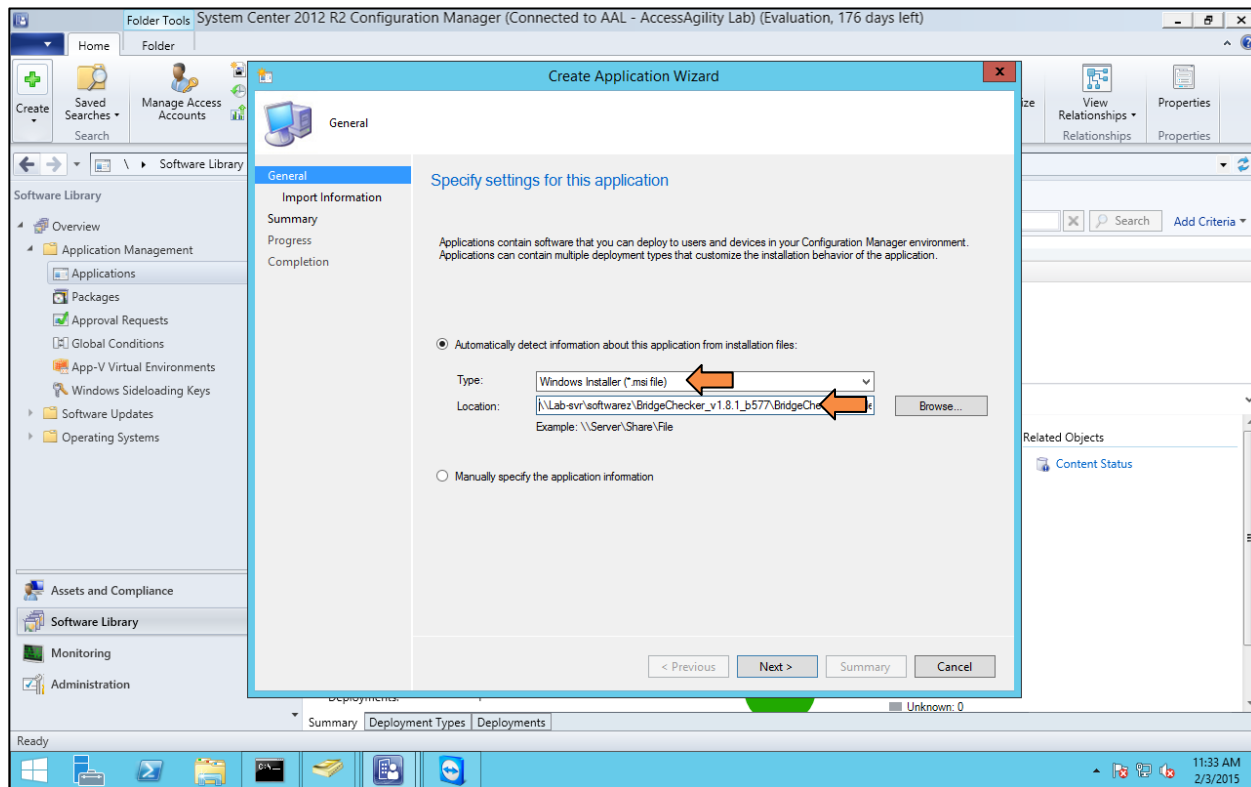
Select the first option to **Automatically detect information about this application from the installation files.**

Leave the type as its default (Windows Installer) and fill in the location with the share name.

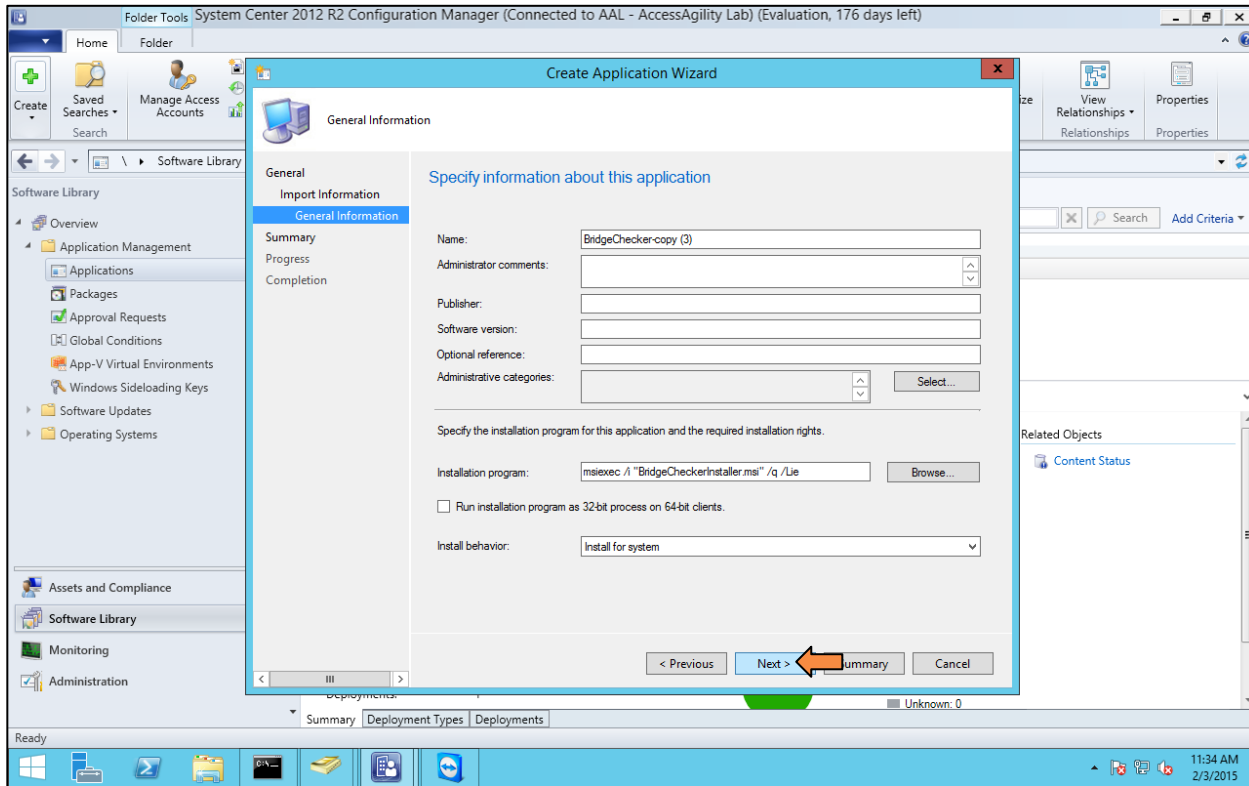
DO NOT PUT THE LOCAL NAME IN THIS SPACE. The name should look something like:

*\\Server\Software\AccessAgility\AwesomeInstall.msi*

Then click **Next**.



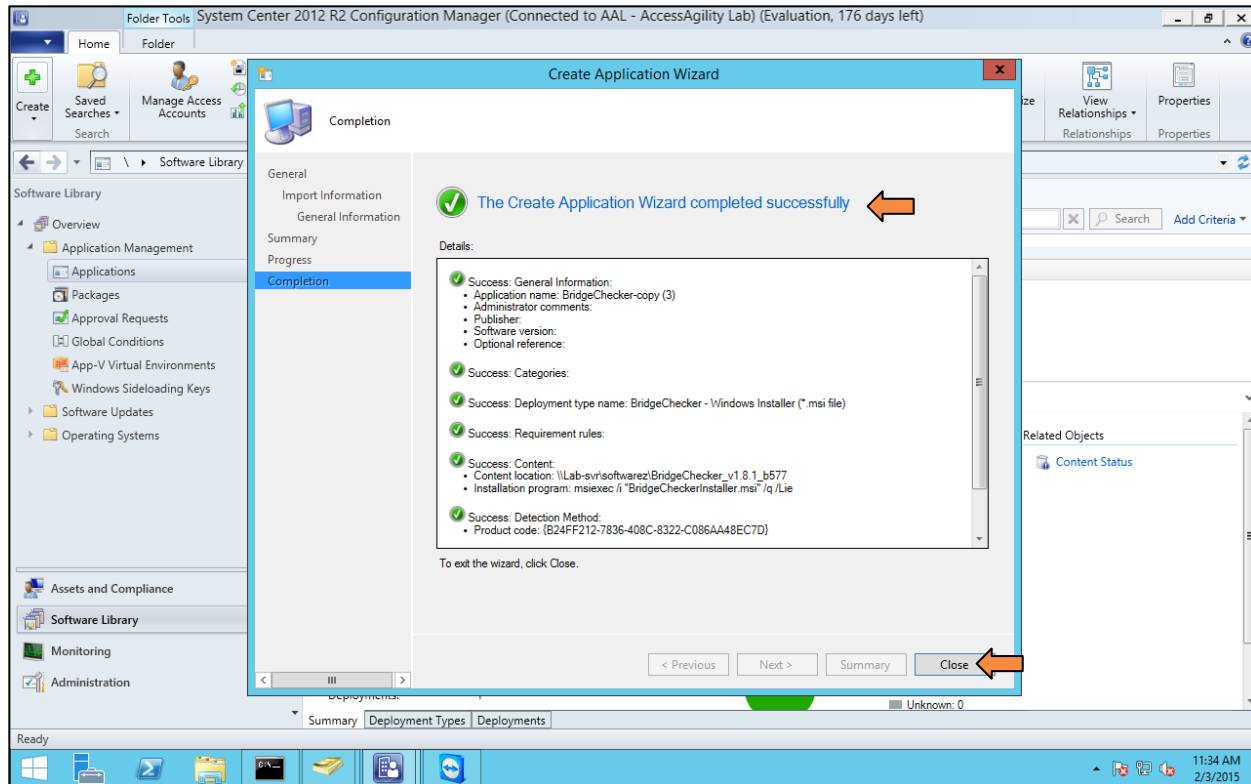
The next screen will have the option to fill out other information about the application. This step is optional. Click **Next**.



*Summary:* This screen will show the summary of the imported information. Click **Next**.

The application will be configured and will see a progress bar.

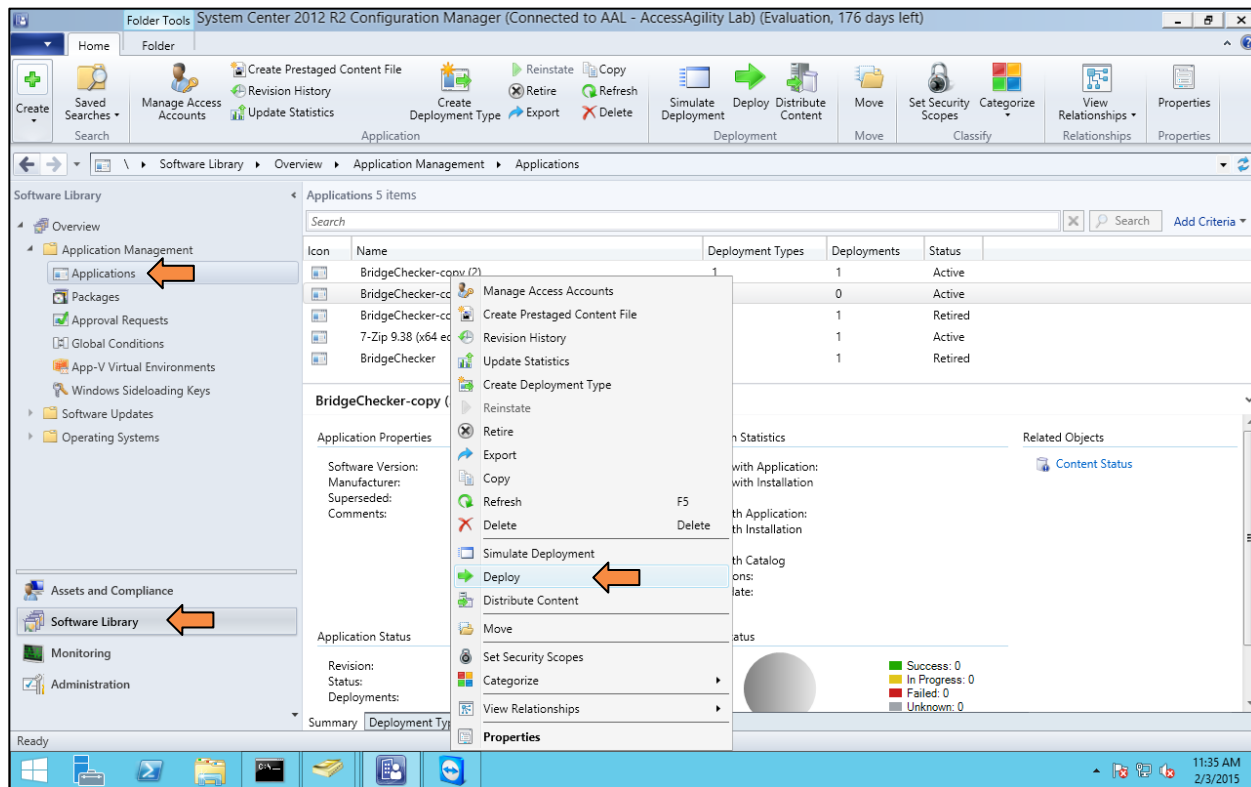
When finished, you are given a *Completion* screen. If everything was successful, click **Close**.



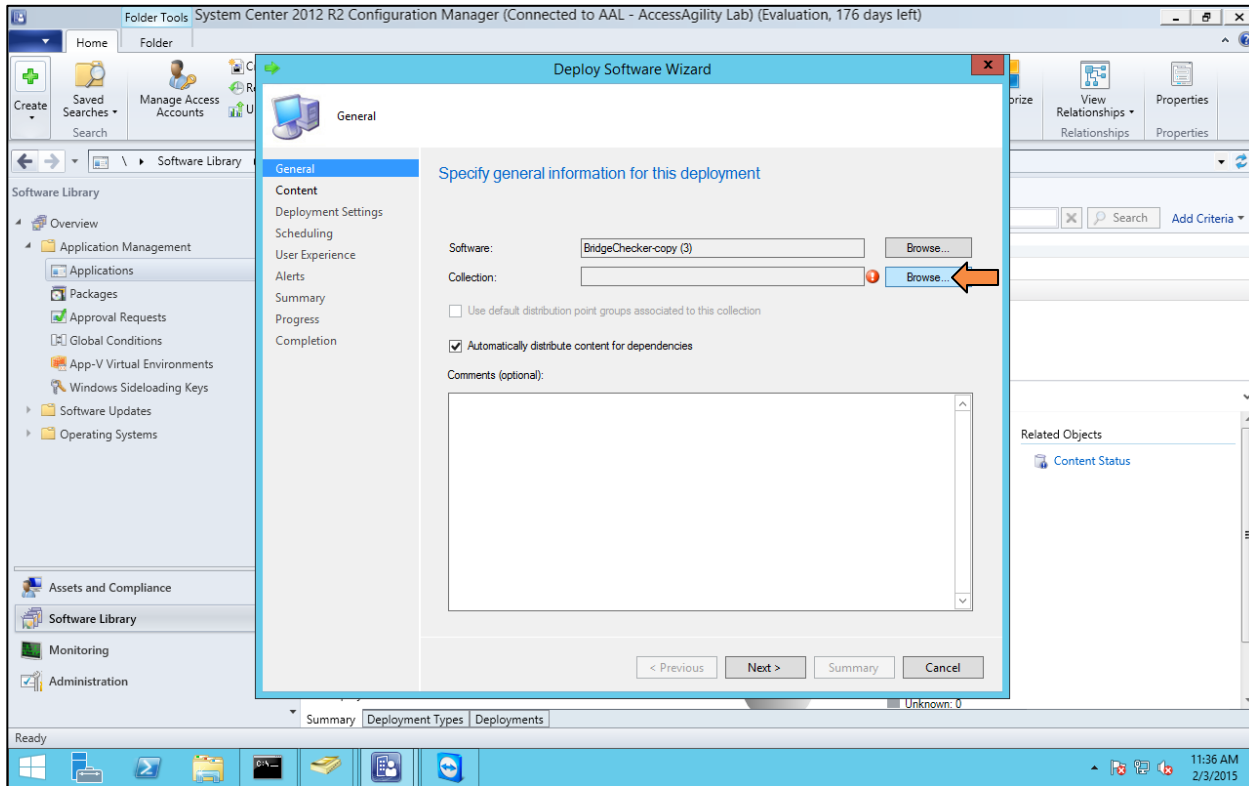
# Deploy Software

Go to **Software Library** → **Applications**

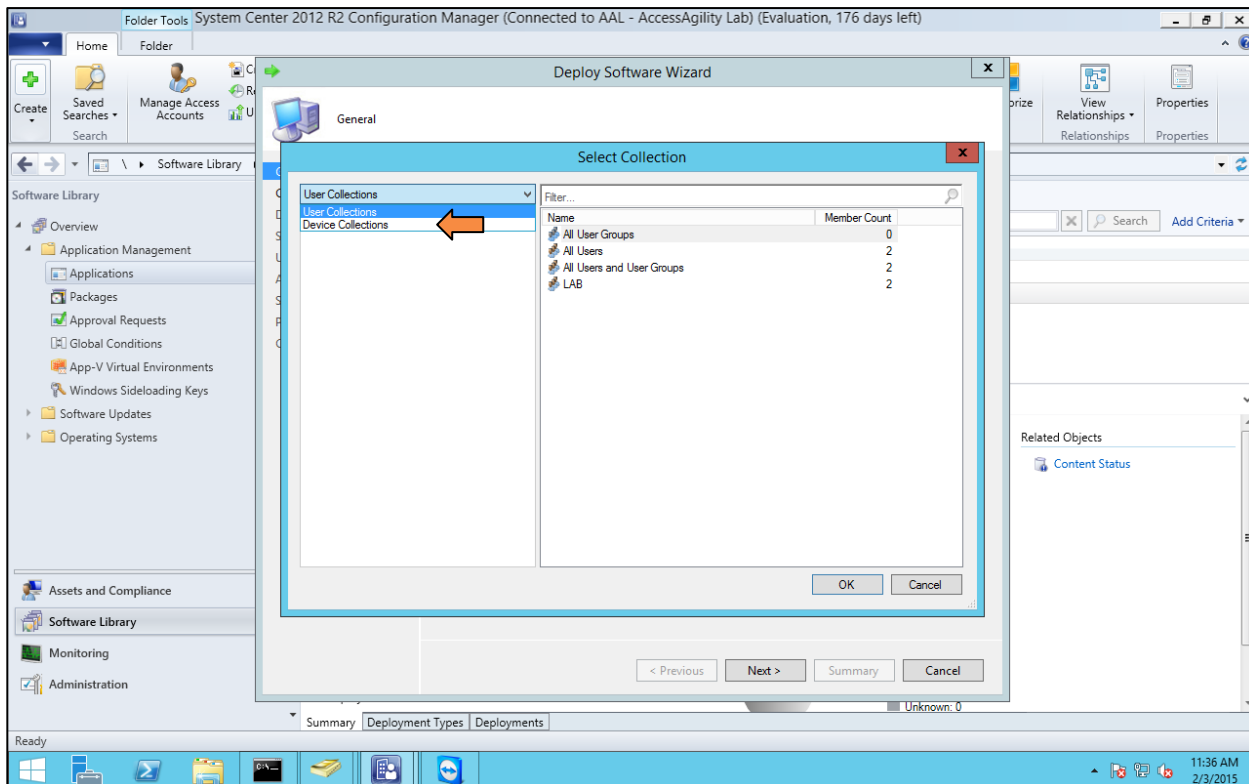
Right click the newly created application, and select **Deploy**.



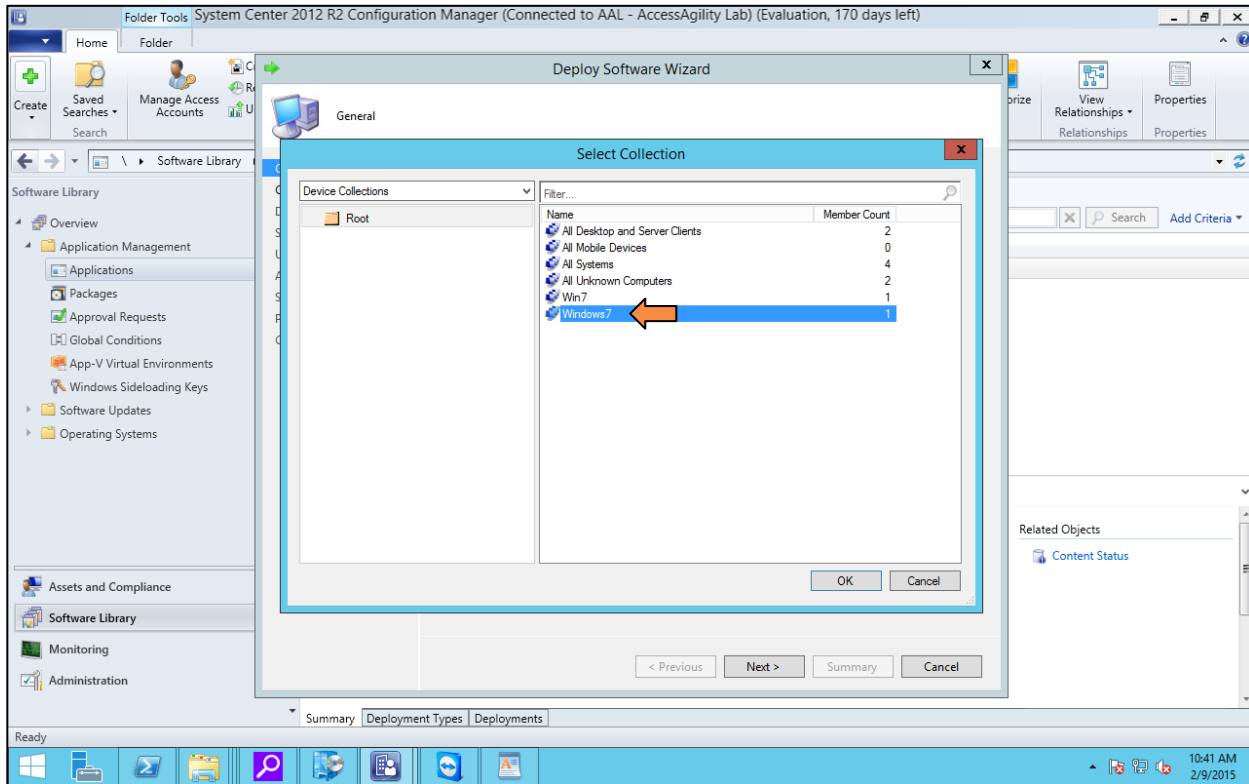
On the *Deploy Software Wizard* page, select the *Collection* to deploy this application.  
Click the **Browse** button.



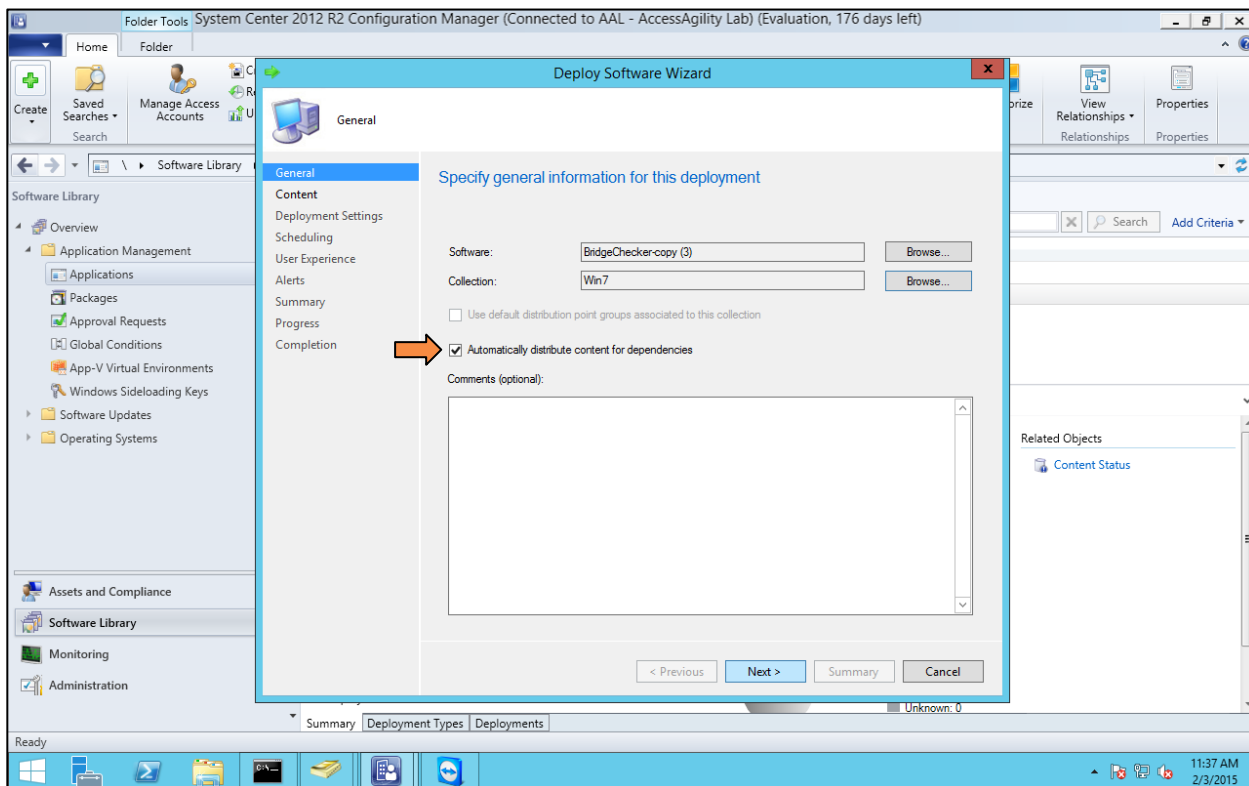
The left side of the window defaults to **User Collections**.  
Click the pull down menu and choose **Device Collections**.



Now, choose the **Device Collection** to deploy this software. I will use the *Windows7* collection we created earlier. When finished, click **OK**.

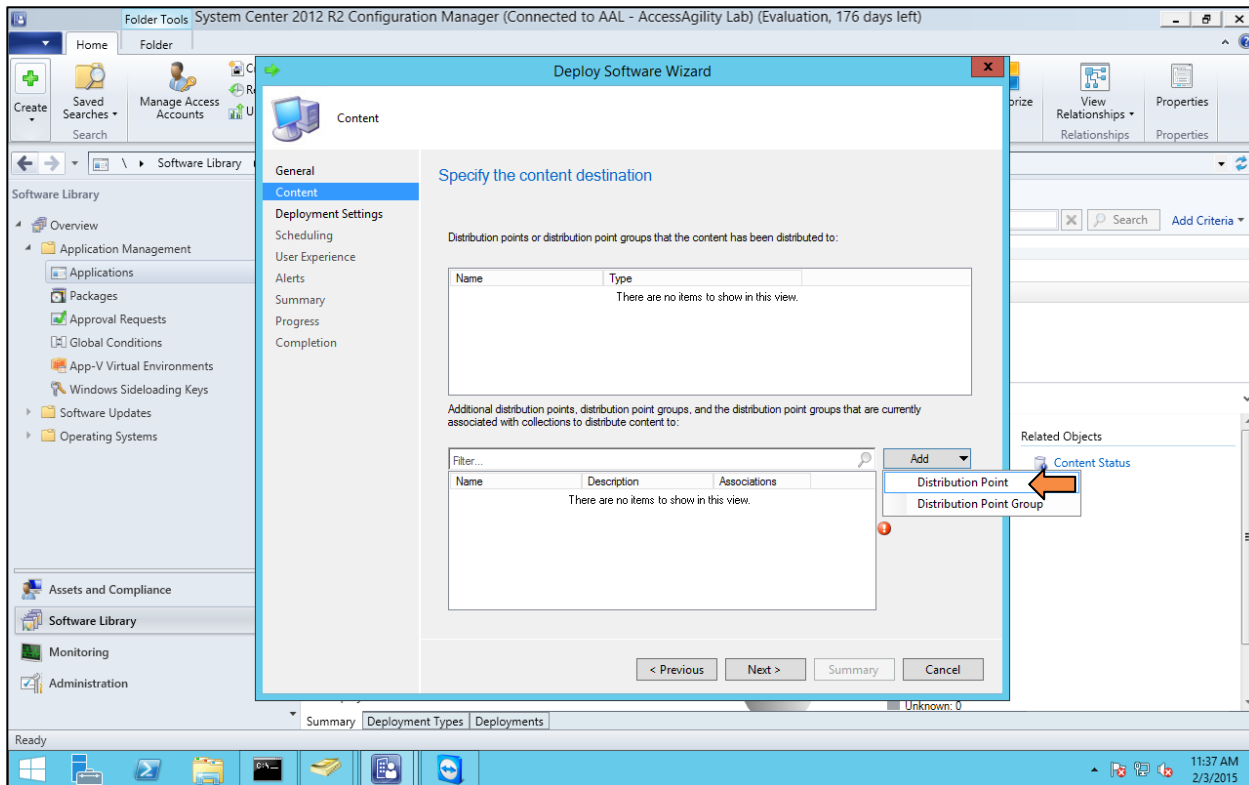


Leave the check box for **Automatically distribute content for dependencies** checked, and press **Next**.

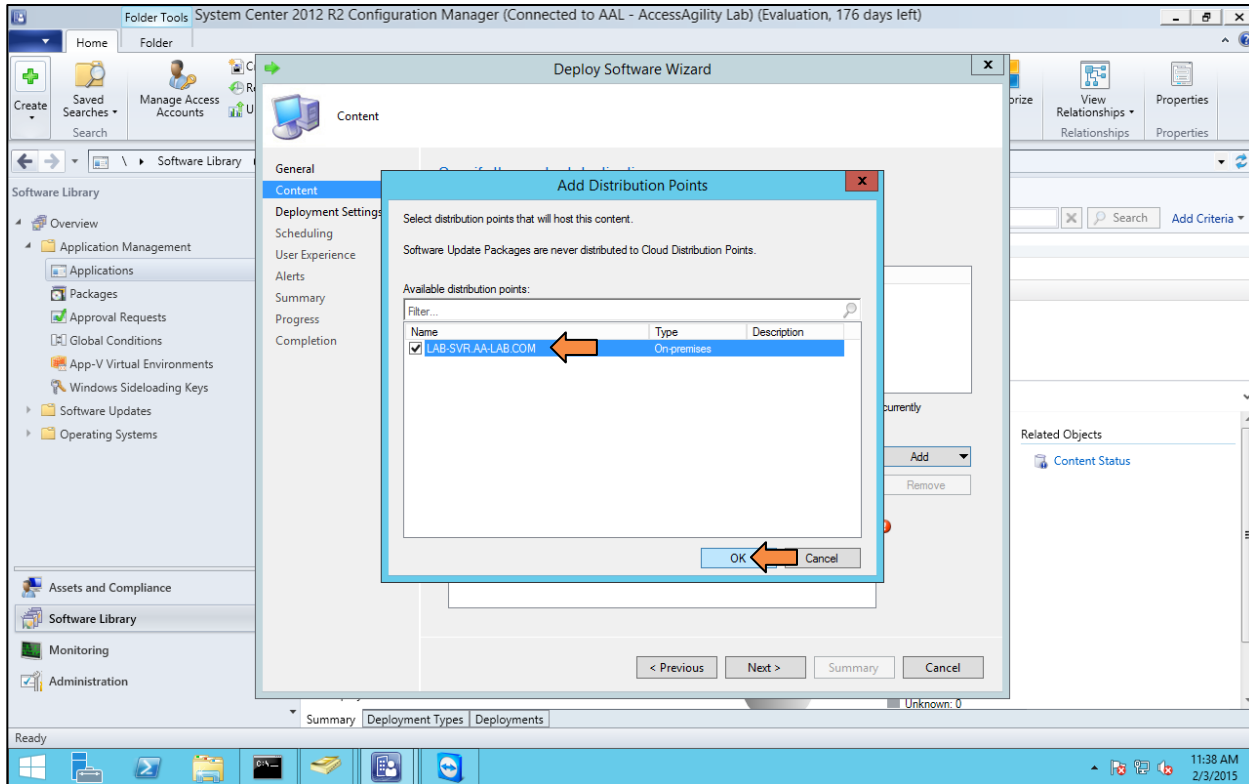




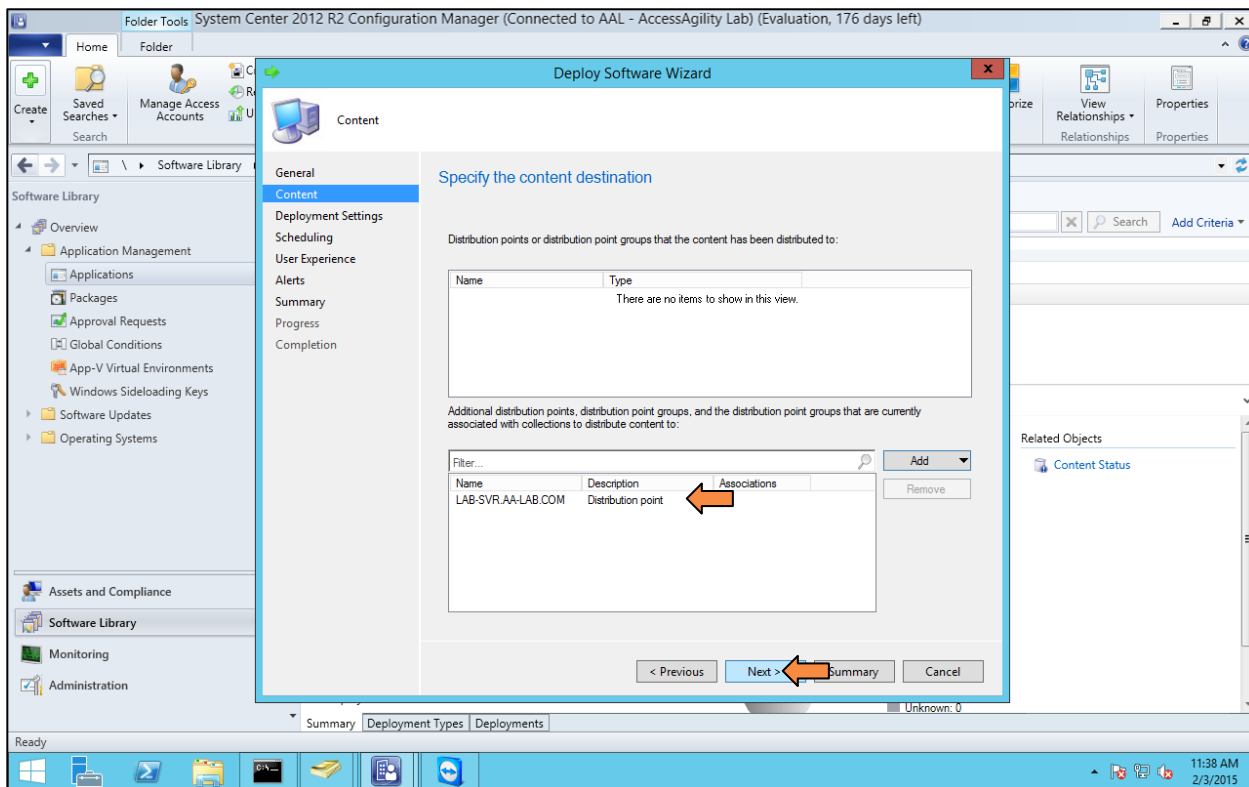
Add a distribution point, which will be the server. Click **Add** and choose **Distribution Point**.



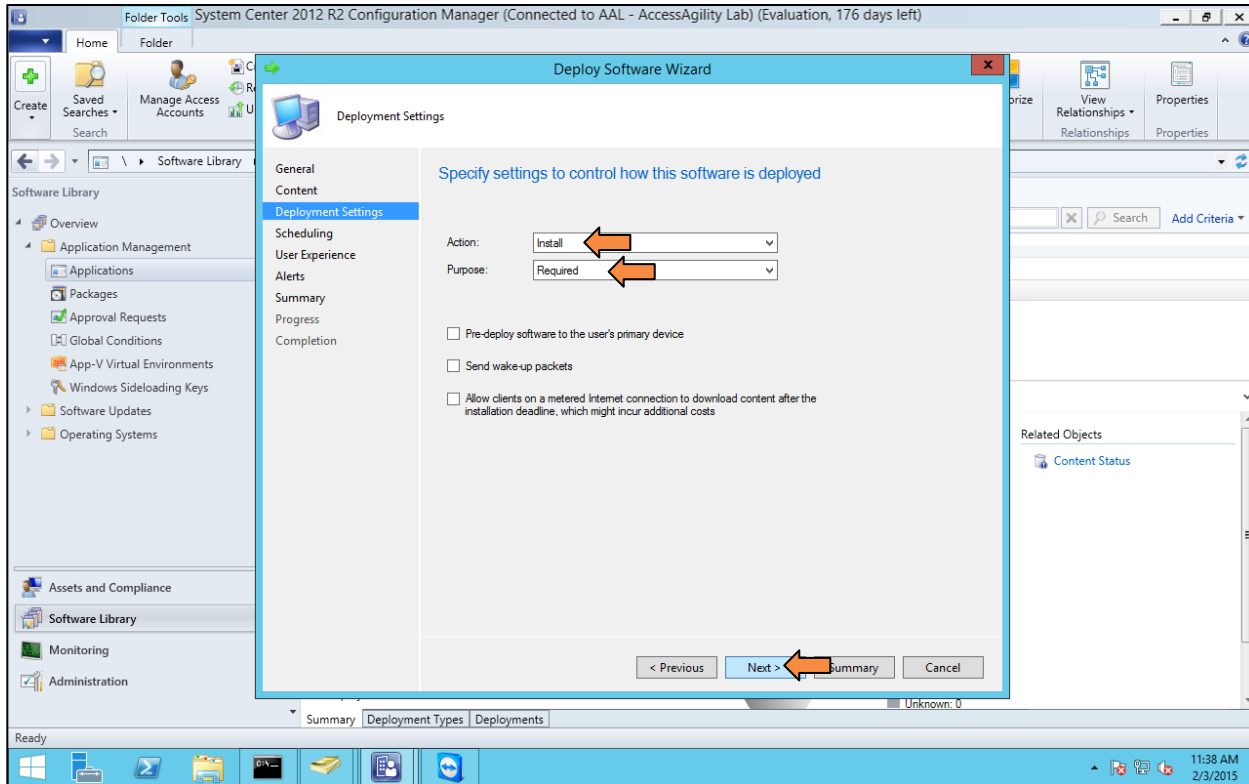
Check the box next to the current server and press **OK**.



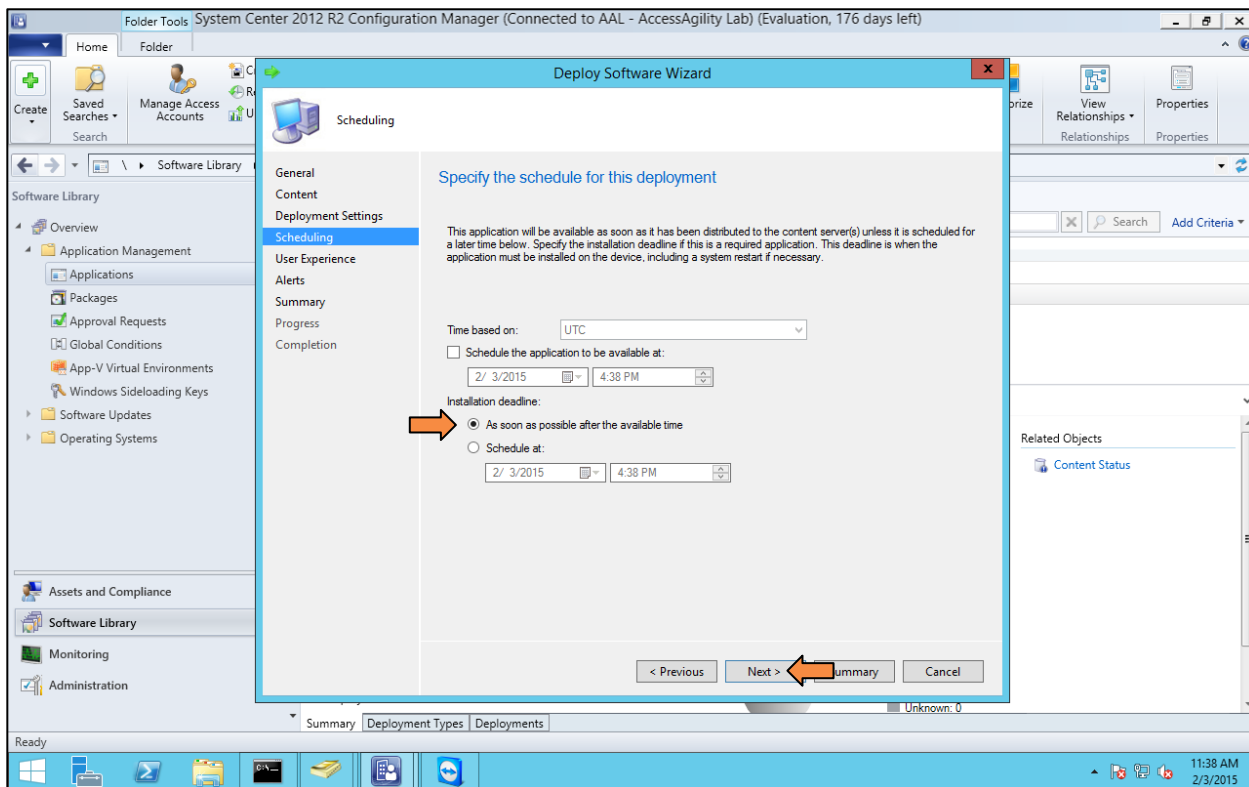
Confirm that the server is now showing in the distribution point box, then click **Next**.



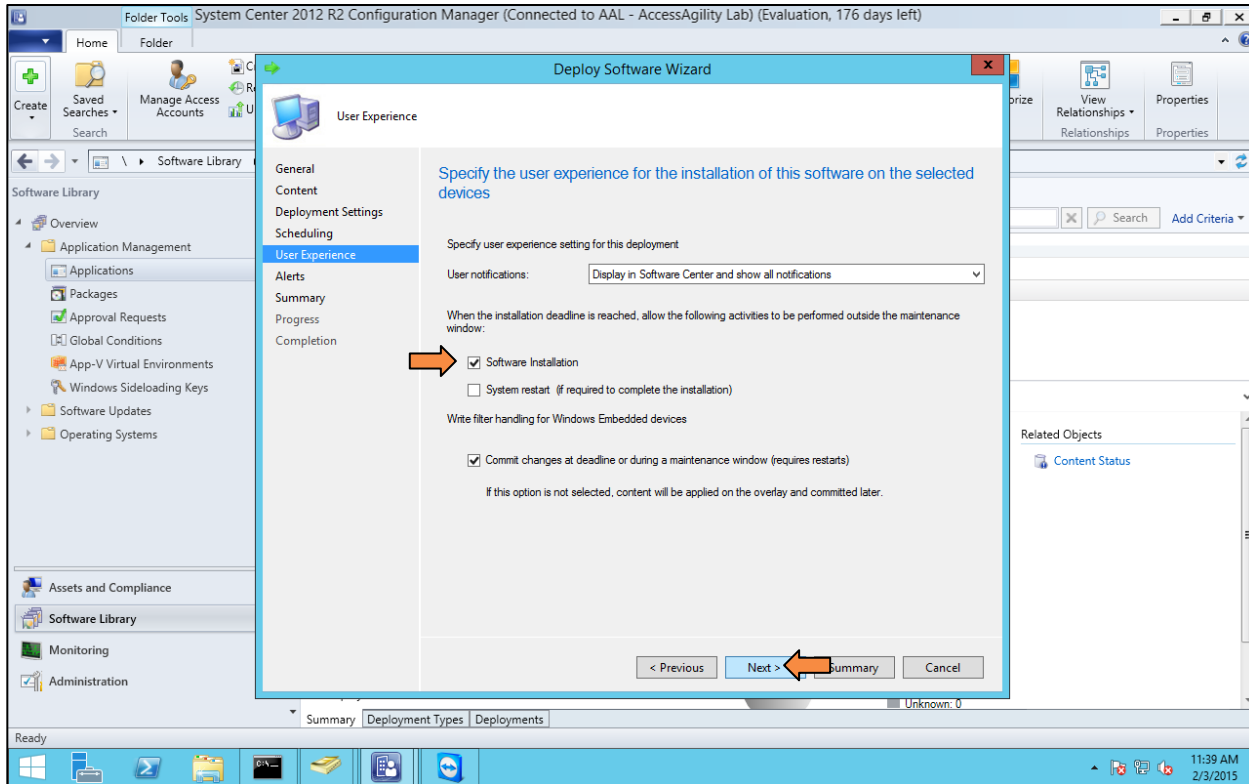
Deployment Settings: Action is **Install**. Purpose is **Required**. Click **Next**.



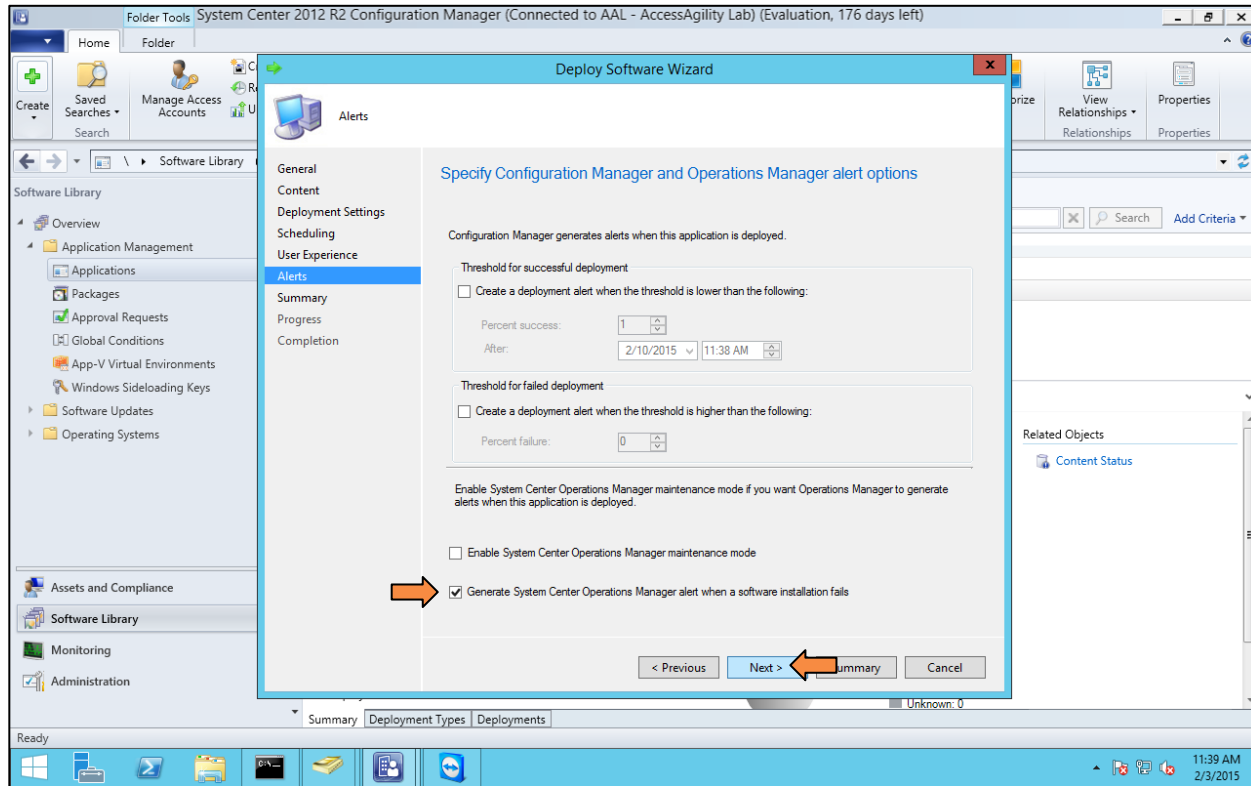
**Scheduling:** Installation deadline is **As soon as possible after the available time**. Click **Next**.



**User Experience:** Check the **Software Installation** box. Click **Next**.

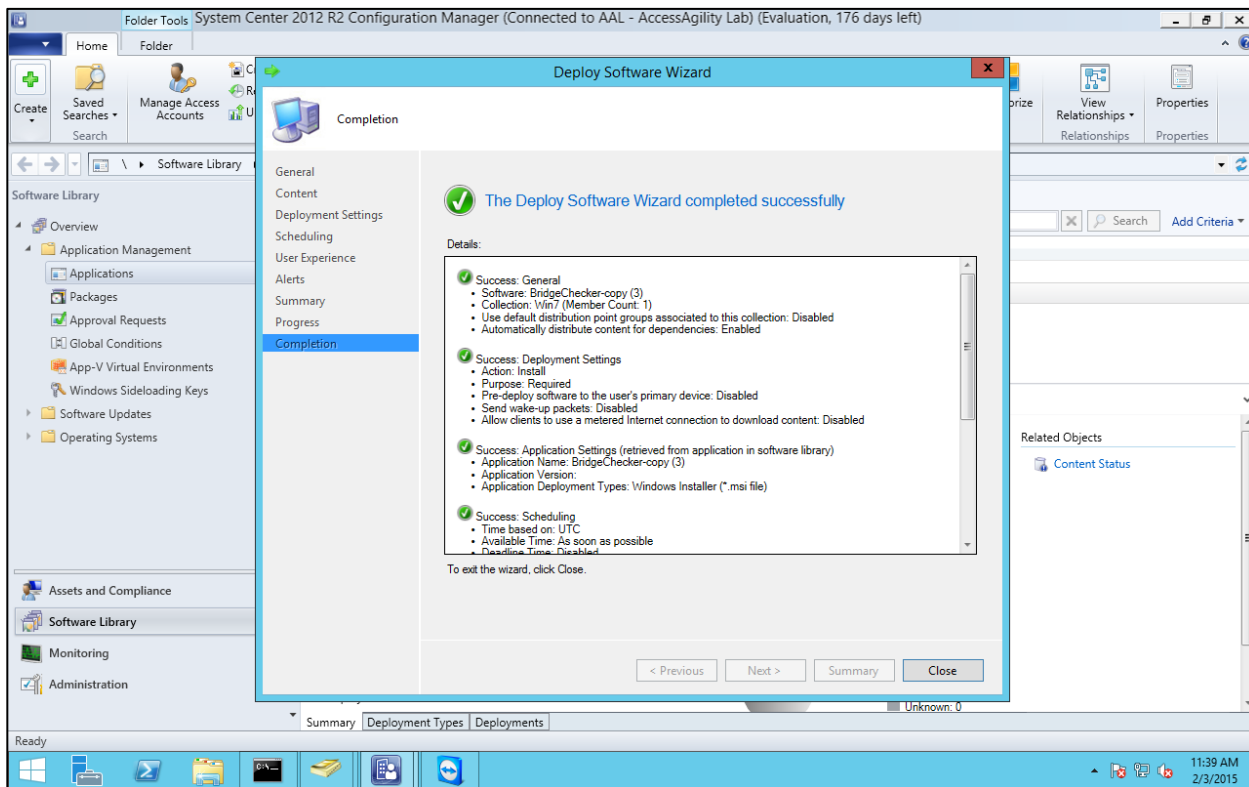


Alerts: Check the **Generate System Center Operations Manager alert when a software installation fails**. Click **Next**.



*Summary:* This screen will show the summary of the imported information. Click **Next**.

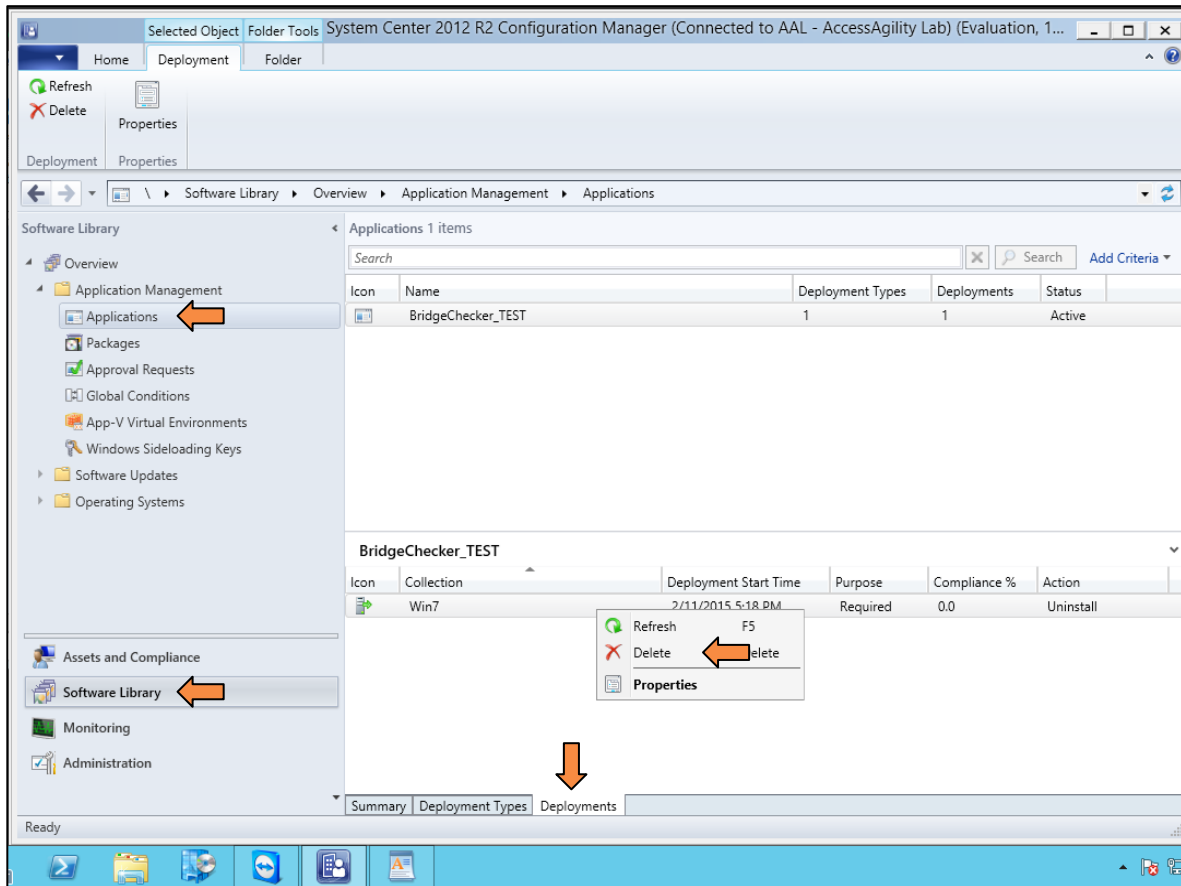
*Progress and Completion:* Shows installation progress and completion results. If there are no problems, click **Close**. Your deployment is now ready to go.



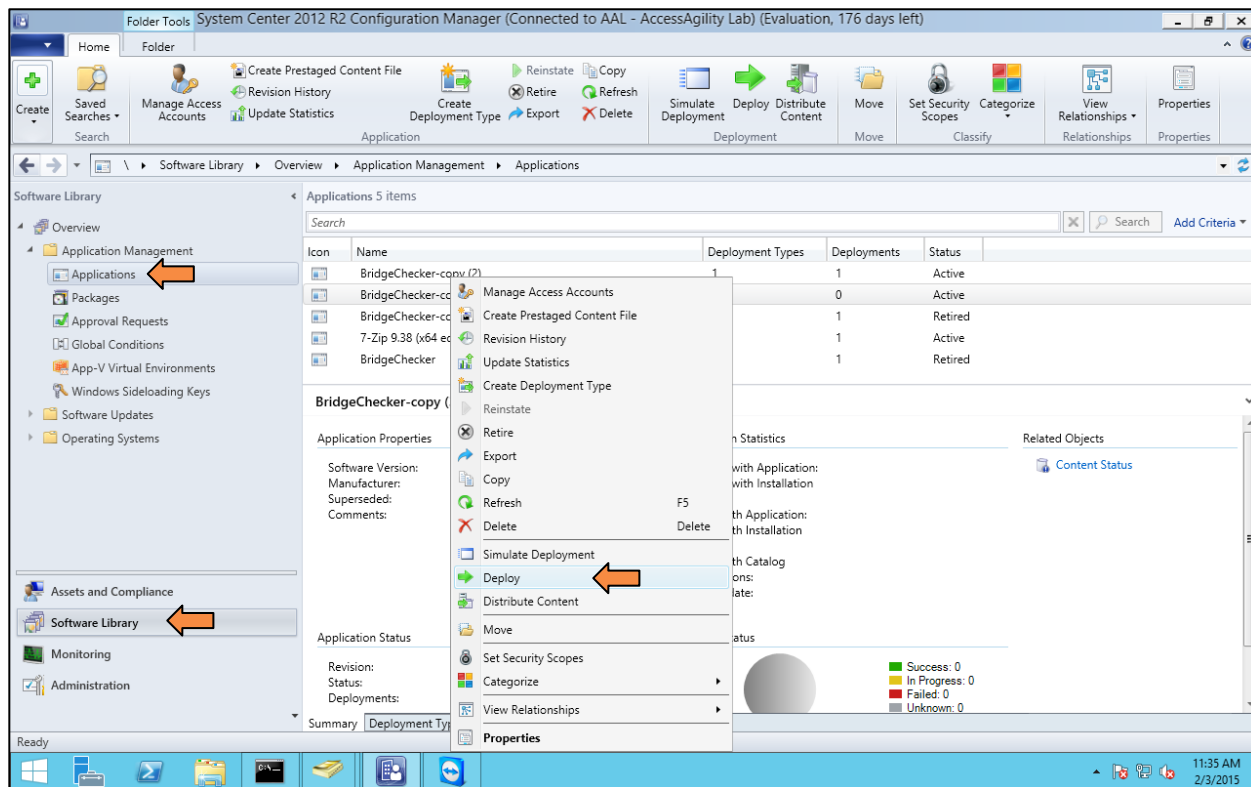
# Uninstall Software Using SCCM

Go to **Software Library** → **Applications**

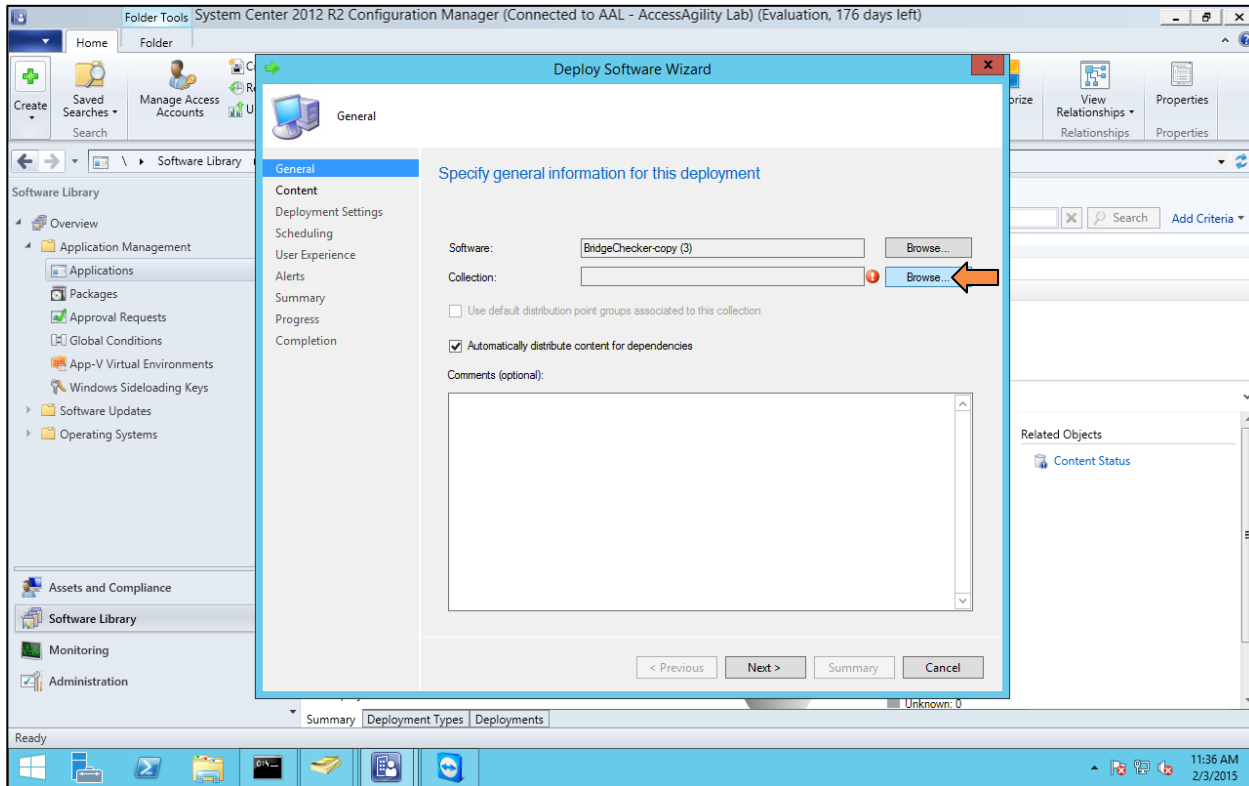
Select corresponding software and then select the **Deployments** tab at the bottom of the window. Right click on the deployment that was used to install the software and click **Delete**.



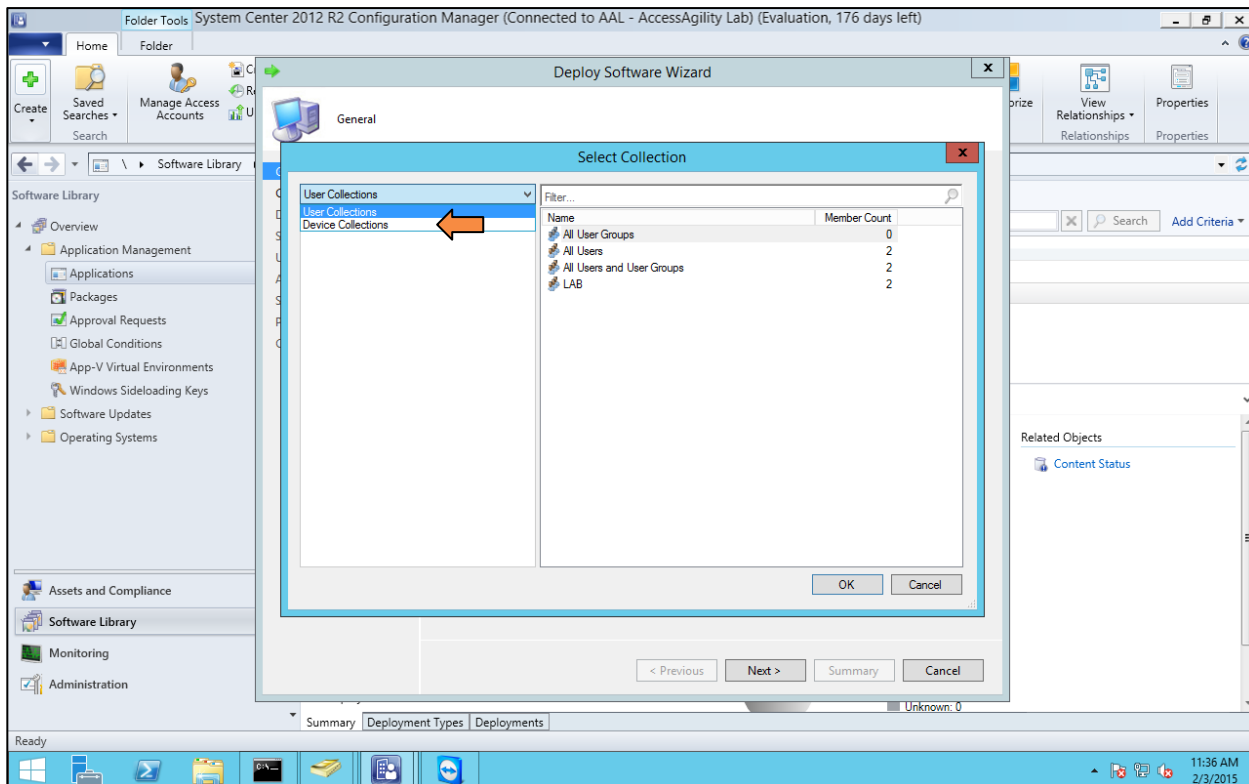
Right click the application, and select **Deploy**.



On the *Deploy Software Wizard* page, select the *Collection* to deploy this application.  
Click the **Browse** button.

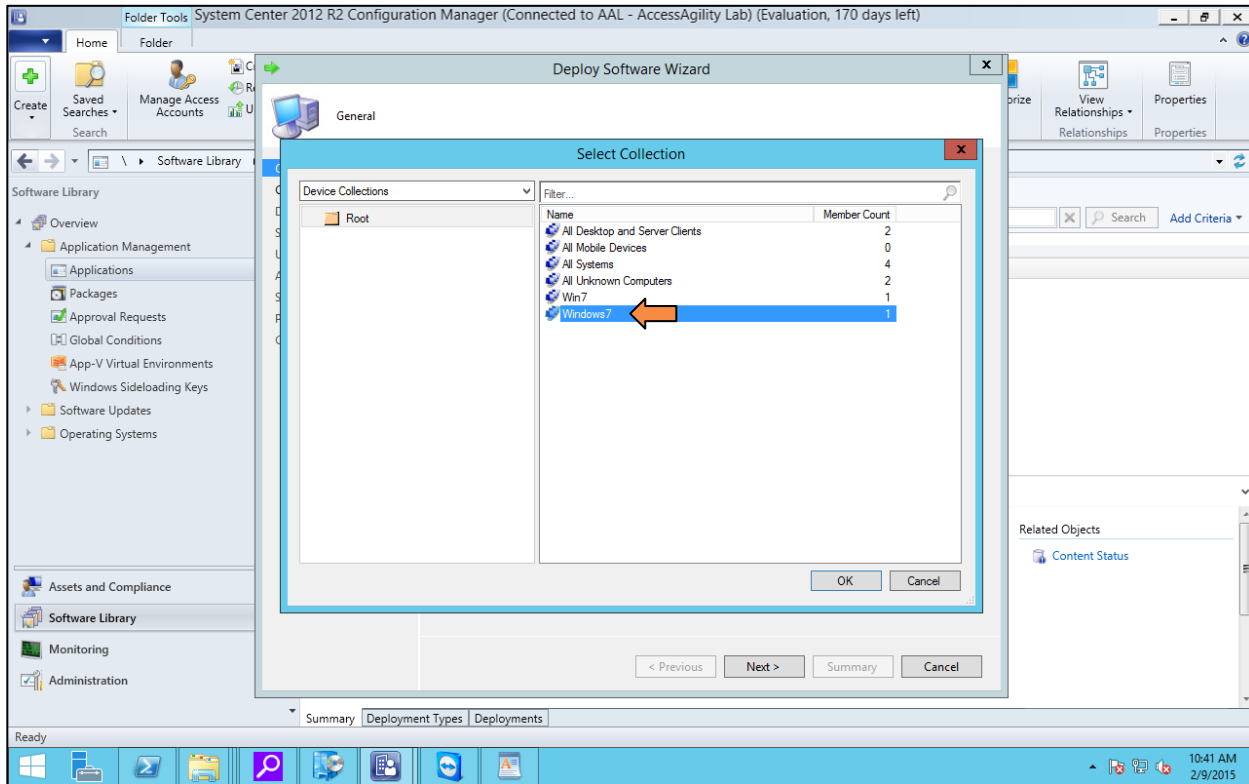


The left side of the window defaults to **User Collections**.  
Click the pull down menu and choose **Device Collections**.

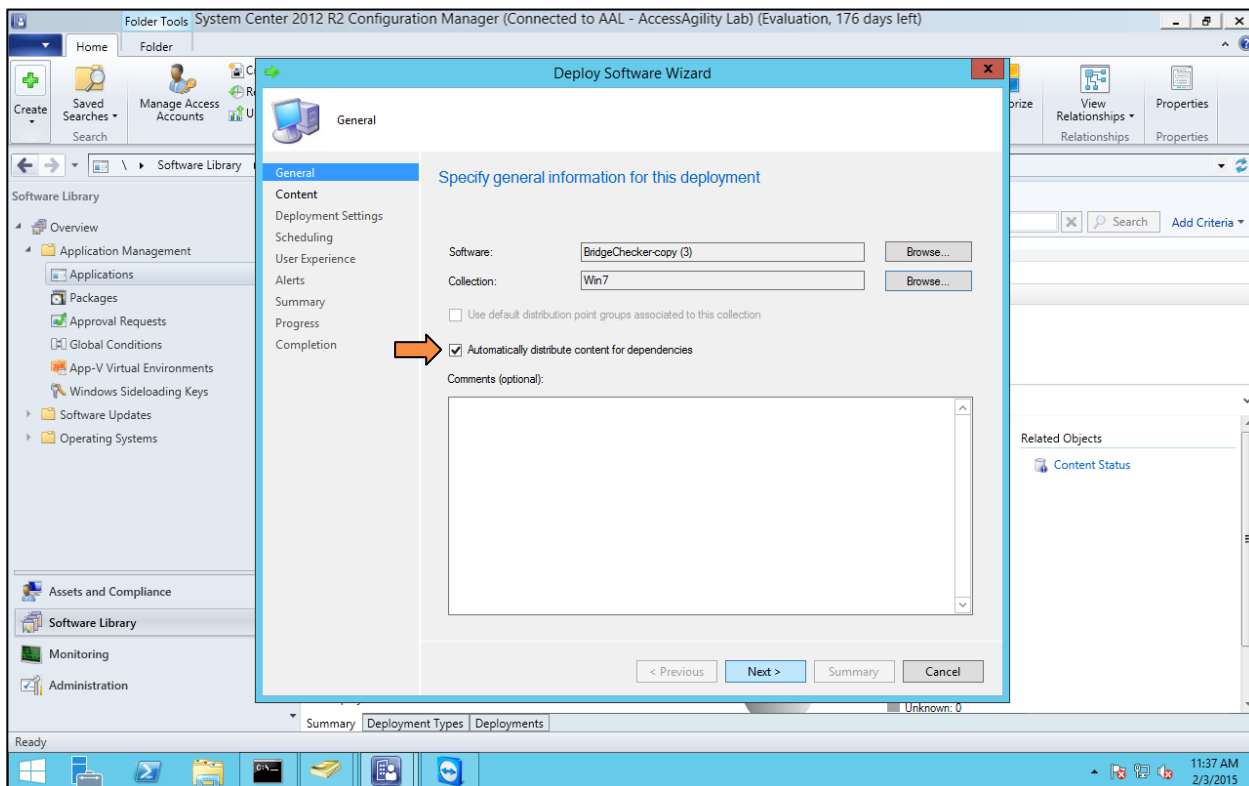




Now, choose the **Device Collection** to deploy this software. I will use the *Windows7* collection we created earlier. When finished, click **OK**.

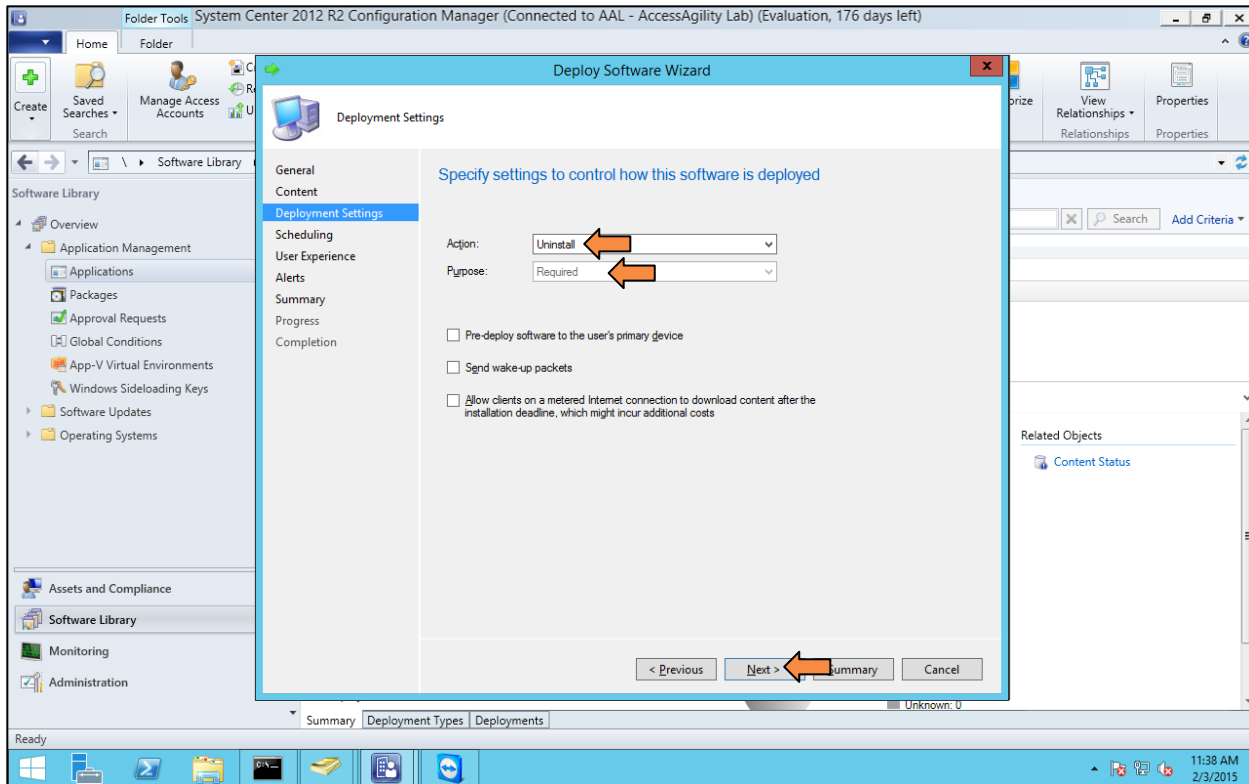


Leave the check box for **Automatically distribute content for dependencies** checked, and press **Next**.

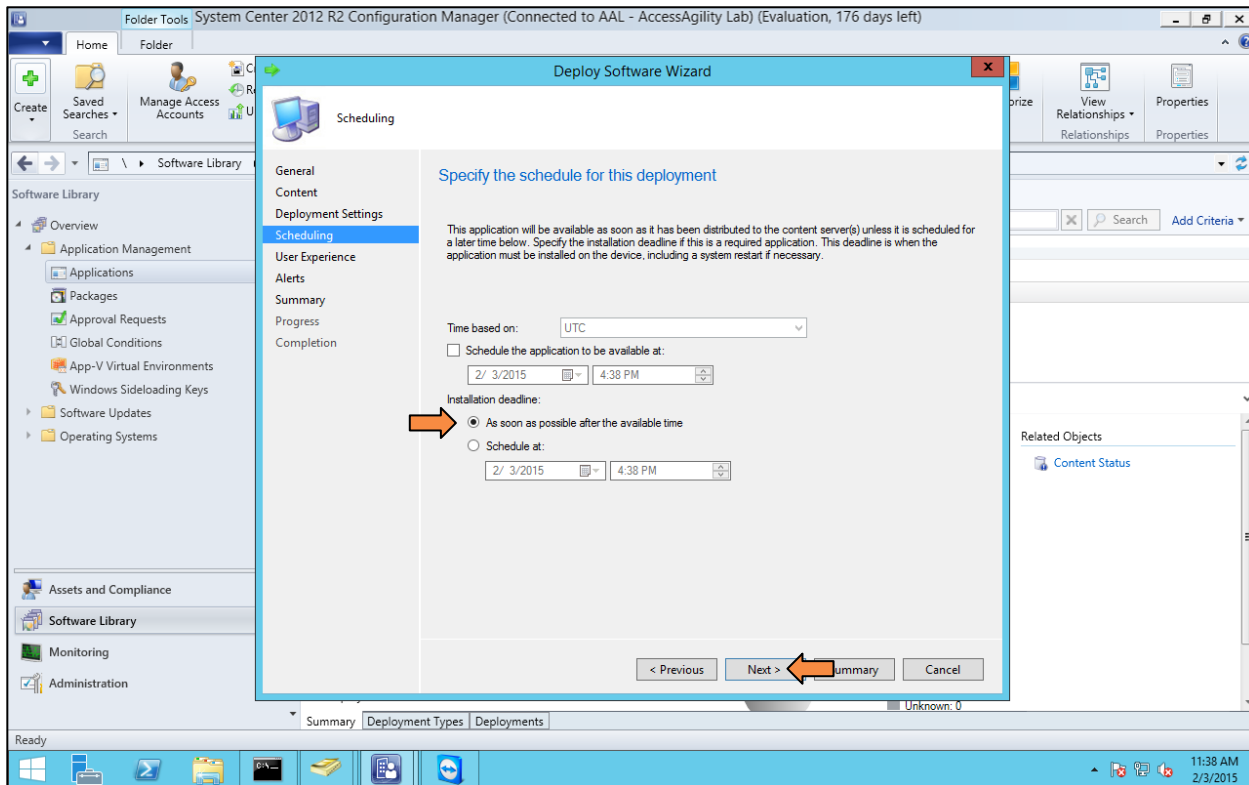


A distribution point will already be populated within the list so click **Next**.

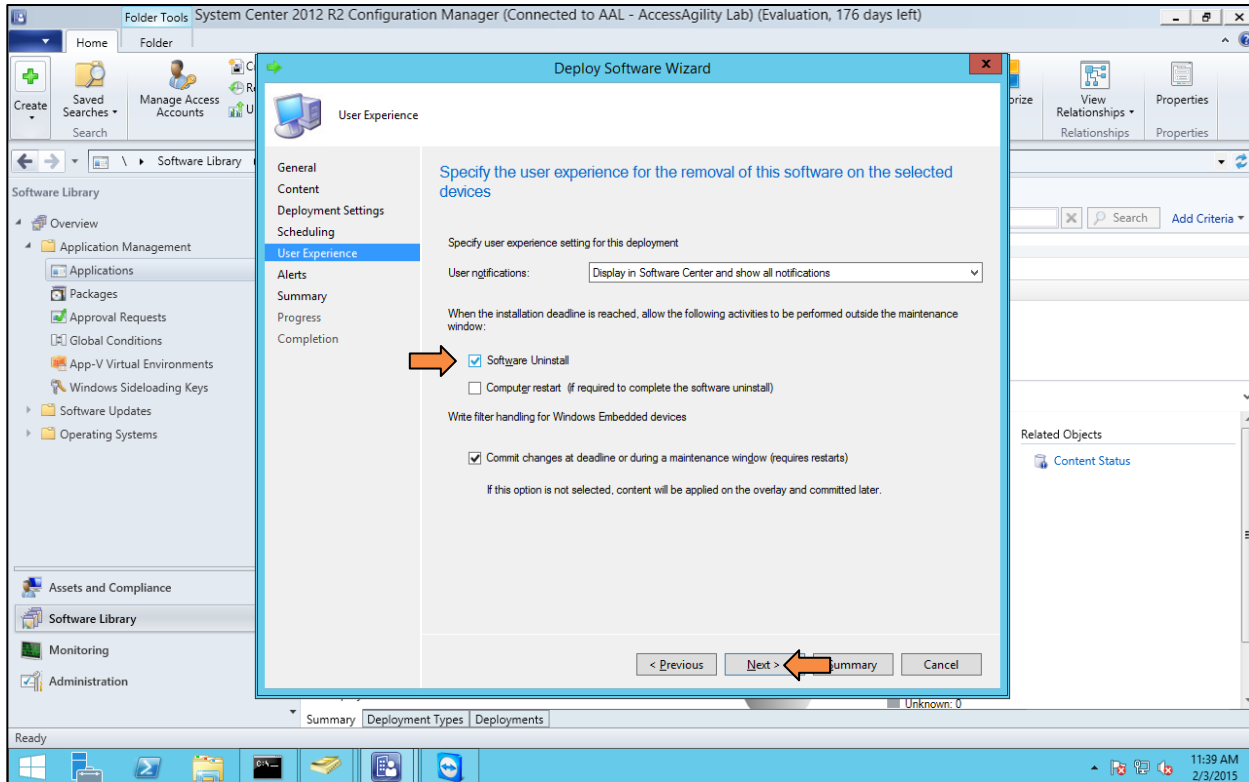
*Deployment Settings:* Action is **Uninstall**. Purpose is **Required**. Click **Next**.



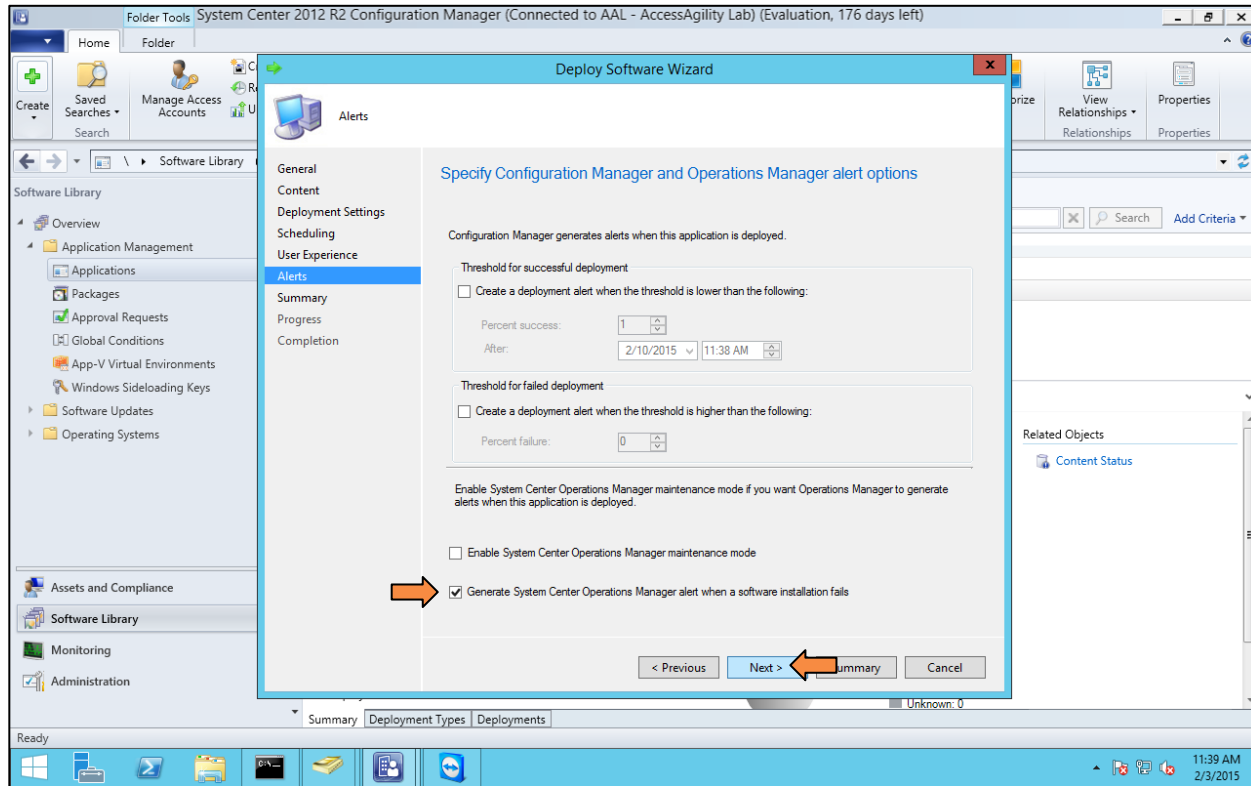
**Scheduling:** Installation deadline is **As soon as possible after the available time**. Click **Next**.



**User Experience:** Check the **Software Uninstall** box. Click **Next**.



Alerts: Check the **Generate System Center Operations Manager alert when a software installation fails**. Click **Next**.



*Summary:* This screen will show the summary of the imported information. Click **Next**.

*Progress and Completion:* Shows installation progress and completion results. If there are no problems, click **Close**. Your deployment is now ready to go.

